



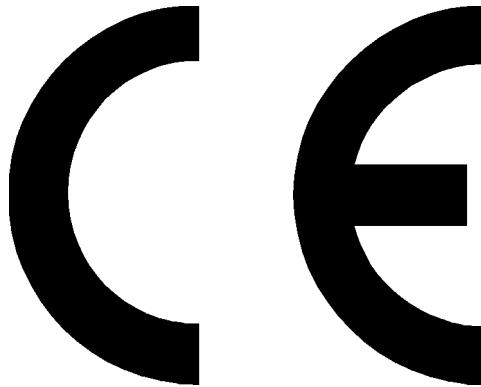
BaseStation

SBS-1eR

SBS-1e and SBS-1

Reference Manual

**Revision 2.2.1
1 February 2011**



This device complies with part 15 of the FCC Rules. Operation is subject to the following two conditions: (1) This device may not cause harmful interference, and (2) this device must accept any interference received, including interference that may cause undesired operation.

CHANGE RECORD

Version Number	Date	Description of Change
2.1.0	18 Jun 2009	Updated for SBS-1eR
2.2.1	26 Jan 2011	Reformatted and updated for BaseStation v1.2.3.155

TABLE OF CONTENTS

OVERVIEW	5
INTRODUCTION.....	5
DOCUMENT CONVENTIONS.....	5
PRODUCT DESCRIPTION.....	5
FURTHER INFORMATION.....	5
SBS-1ER FRONT PANEL LED INDICATORS DESCRIPTION.....	6
BASESTATION SOFTWARE REFERENCE	7
SCREEN LAYOUT	7
THE "RADAR" SCREEN	9
MAIN MENU.....	11
<i>File Menu</i>	<i>11</i>
<i>Edit Menu</i>	<i>12</i>
<i>Radar Menu</i>	<i>12</i>
<i>Aircraft Menu.....</i>	<i>23</i>
<i>Settings Menu</i>	<i>26</i>
<i>Help Menu</i>	<i>44</i>
AIRCRAFT LIST	45
<i>What The Aircraft List Shows.....</i>	<i>45</i>
<i>Using The Aircraft List</i>	<i>47</i>
<i>Customising The Aircraft List</i>	<i>48</i>
TOOLBAR.....	49
<i>Zoom Diameter Selector</i>	<i>49</i>
<i>Zoom Diameter Slider</i>	<i>49</i>
<i>Saved View Selector.....</i>	<i>49</i>
<i>Current Location Selector.....</i>	<i>49</i>
SIDEBAR.....	51
RADIO INTERFACES	52
USING THE BUILT-IN RADIO RECEIVER: SBS-1ER	52
<i>Customising The Built-in Radio User Interface.....</i>	<i>52</i>
<i>Using The Radio Interface</i>	<i>52</i>
USING THE EXTERNAL RADIO INTERFACE.....	57
<i>Enabling The External Radio Interface.....</i>	<i>57</i>
<i>Customising The External Radio User Interface</i>	<i>57</i>
<i>Using The External Radio Interface.....</i>	<i>57</i>
BASESTATION REPORTER.....	60
INTRODUCTION.....	60
USING BASESTATION REPORTER	60
<i>Main Screen</i>	<i>60</i>
<i>Menus</i>	<i>62</i>
BASESTATION LOGGER	64




1 Overview

1.1 Introduction

This manual is a reference guide to the BaseStation application for the SBS-1eR. If you have just started using your system then you should first consult the Getting Started manual.

This version of BaseStation may also be used with the SBS-1e and the classic SBS-1, although not all features will apply. Features that do not apply to all versions are marked in this manual with the symbols **SBS-1eR**, **SBS-1e** and **SBS-1** as appropriate. Please note that it may also be necessary to upgrade the firmware when upgrading to the latest version of BaseStation.

1.2 Document Conventions

-  A paragraph with this symbol contains a handy tip that will help you use the product more efficiently.
-  A paragraph with this symbol contains an important point that you need to understand.
-  A paragraph with this symbol warns you about possible problems you might encounter.

1.3 Product Description

Place here a brief description of the what the product does, and specify the environment (such as operating system) and any supporting equipment required to use it.

1.4 Further Information

A useful source of further information can be found at the SBS-1 Forum:

www.kinetic.co.uk/forums

Accessories may be purchased from:

www.kinetic.co.uk/estore



1.5 **SBS-1eR** Front Panel LED Indicators Description



LED INDICATORS (viewed from the front – running left to right)

Power Indicator	USB Enumerated	SBS-1eR Connected To BaseStation	Updating Non Volatile Memory	Reserved	Connected via Ethernet	Reserved	Bar graph of aircraft activity. Left to Right Orientation			
Red	Orange	Green	Orange	Red	Yellow	TriColour	Blue	Blue	Blue	Blue



2 BaseStation Software Reference

2.1 Screen Layout

The main screen of the application looks something like this:

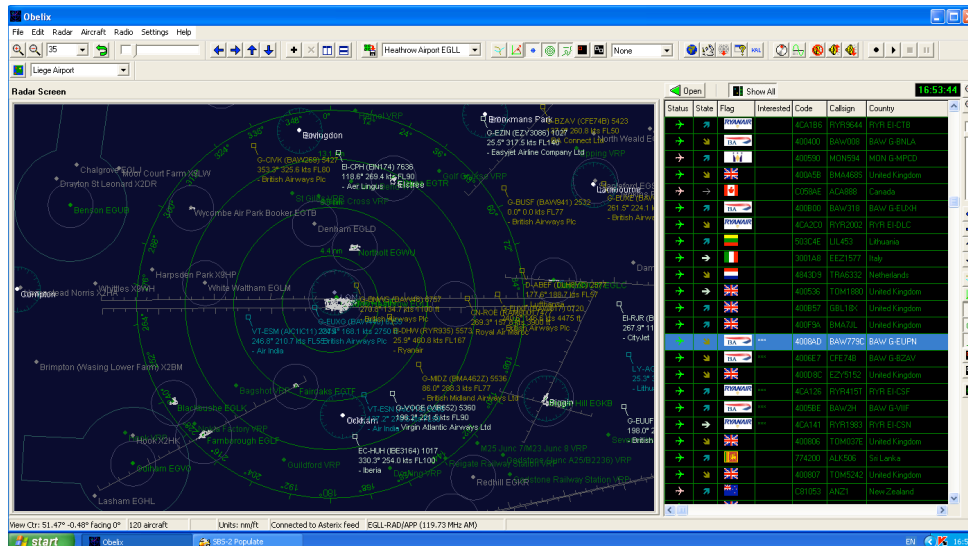


Figure 1: Application main screen

On the left is the Radar Screen and on the right is the Aircraft List. In between them is a splitter control – which you can drag in and out with the mouse to change the width of the Aircraft List.

At the top is the toolbar, which contains shortcut buttons to activate the most frequently used menu items.

Along the right-hand side is the sidebar, which contains shortcut buttons to some menu items related to the radar view. The sidebar is the only part of the user interface that remains visible when in full screen mode.

You can also toggle between a normal and expanded Aircraft List by clicking on the *Aircraft List Expand* button (the button with a green triangle and the caption *Open*). The picture below shows the screen after the Aircraft List has been expanded:

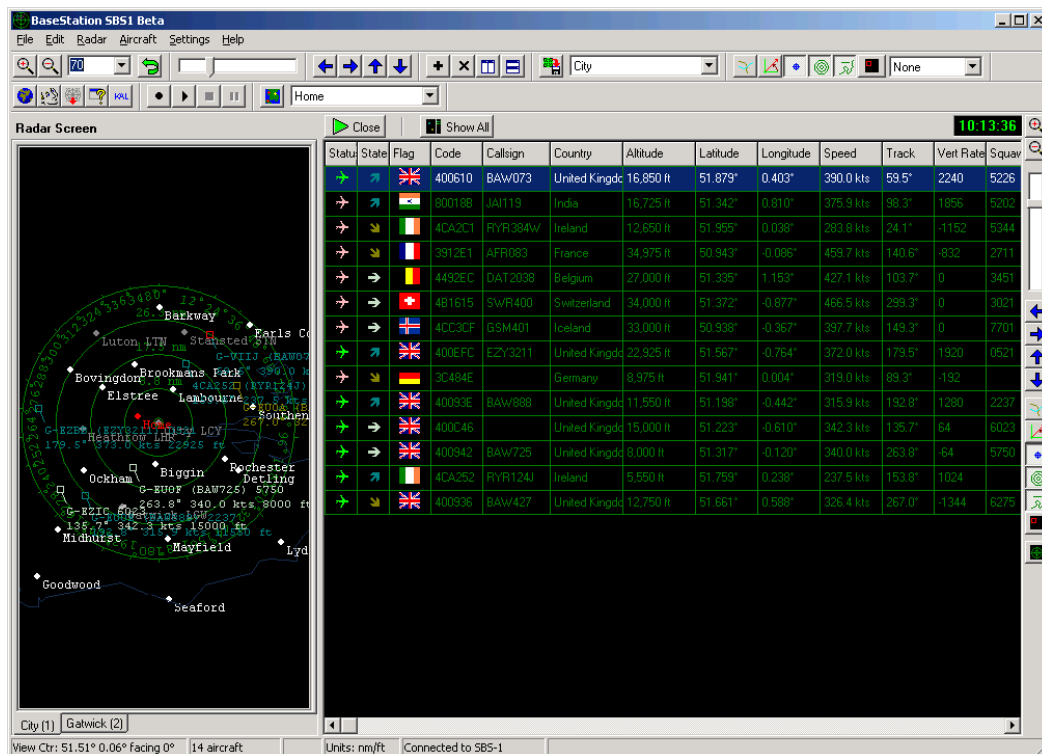


Figure 2: Application main screen with aircraft list expanded

To return the Aircraft List to the normal width, simply click once again on the *Aircraft List Expand* button (the caption on the button will have changed to *Close*).

2.2 The “Radar” Screen

The radar screen looks something like this:

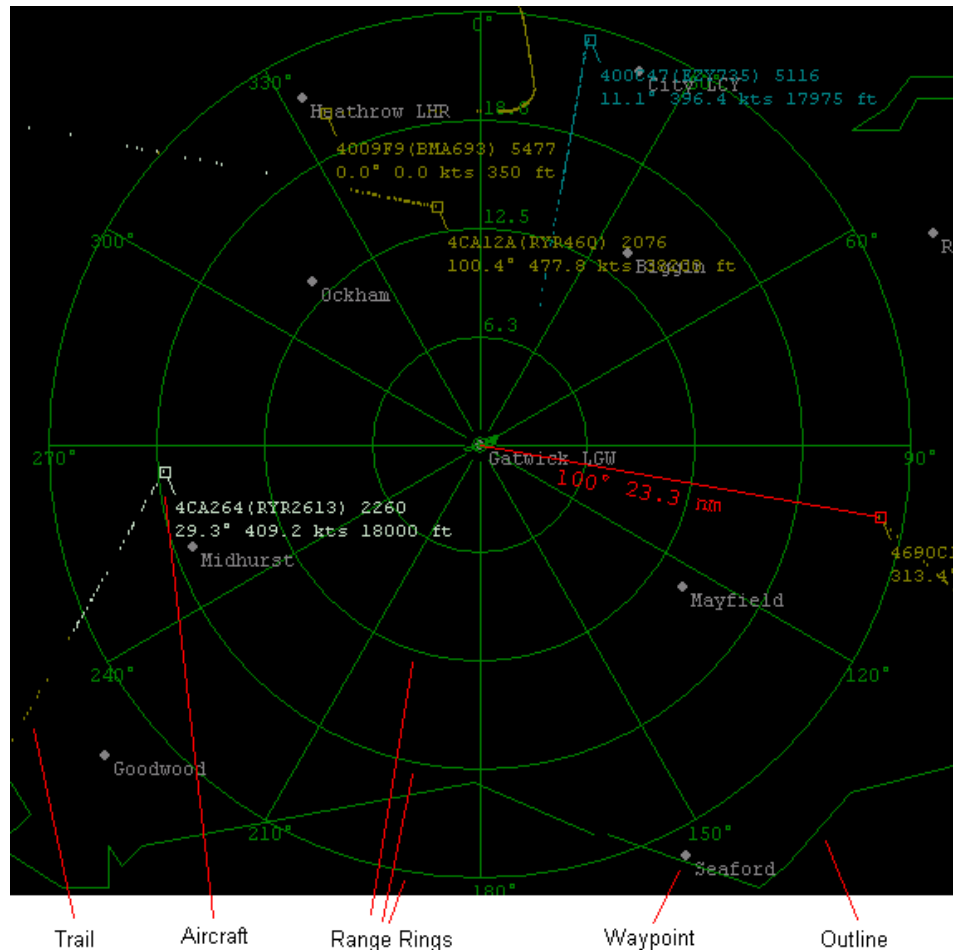


Figure 3: Radar Screen

The above example shows the screen centred on the Gatwick waypoint with a diameter of 50 nautical miles. Five aircraft can be seen on the screen, one of which, 4690C1, is shown as a red box to indicate that it is selected. Since the Display Bearing & Distance option has been enabled for this radar screen, a red line displays the bearing (100 °) and range (23.3 nautical miles) of that aircraft from the centre of the view (Gatwick).

The aircraft, and the trails indicating their past positions, are colour coded to indicate whether they are climbing, descending, or flying level. By default, these colours are:

- Ascending
- Descending
- Level

(The way to remember it is that ascending aircraft are flying towards blue sky, descending aircraft are flying towards brown earth, and aircraft flying straight and level are somewhere in between – hence the blue-green colour).

In our example, 400C47 (top of the screen) has been steadily climbing, 4CA12A (top middle of the screen) was flying straight and level when it entered the screen but is now descending, and 4CA264 (left middle of the screen) was descending when it entered the screen, but is now flying straight and level.

There are two other colours that aircraft can be shown as:



Aircraft that are currently on the ground are shown as grey. If BaseStation does not receive a signal from an aircraft for a set period of time (by default, this is 30 seconds), the colour of that aircraft is changed to yellow. If nothing is received for a further 5 seconds, then the aircraft is removed from the screen.

- ☞ These colours and times can be configured using the *Settings > Display Settings* menu and the *Settings > Data Settings* menu respectively.

2.3 Main Menu

This section of the manual describes the function of each menu item available from the application's main menu bar.

☞ Many of these functions are also available via toolbar buttons and/or shortcut keys.

2.3.1 File Menu

2.3.1.1 Start Recording

This menu option brings up a box that prompts you for the name of a file to save received data to. The default file name will be *yyyymmdd-hhmmss.bst*, where *yyyymmdd* and *hhmmss* represent the date and time. Once you click on Save, all received aircraft transponder messages will be saved to the file.

☞ Toolbar button  Keyboard shortcut Ctrl-R

2.3.1.2 Play Previous Recording

This menu option brings up a file selection dialog box that allows you to select a .bst file that you previously recorded a session to. The application will then "play" the data in that file, displaying it **instead** of the data being received from the SBS-1.

☞ Toolbar button 

2.3.1.3 Stop Recording/Playing

This menu option is enabled only if you are either recording or playing a session. It stops the recording or playing that is in progress.

☞ Toolbar button 

2.3.1.4 Pause Playing

This menu option is enabled only if you are currently playing a session. It pauses the playing.

☞ Toolbar button 

2.3.1.5 Print

This menu item has two sub-menu options.

- *Print Radar Screen*: Prints the currently selected radar screen. If there is only one radar screen currently visible then that is the one that will be printed. If you have split the screen into two then the one that is highlighted by a red box around it will be printed.
- *Print Aircraft List*: Prints the Aircraft List (the grid of data on the right-hand side of the screen).

2.3.1.6 Exit

This menu option shuts down the application.

- ☞ By default BaseStation displays a box asking “*Do you really want to shut BaseStation down?*” each time you close the application. You can turn this prompt off using the *Confirm on Close* checkbox on the *Display Settings* tab of the *Settings > Display Settings* menu.

2.3.2 Edit Menu

2.3.2.1 Copy Radar Screen

This menu option copies the currently selected radar screen to the Windows clipboard as a bitmap image that can then be pasted into standard Windows graphical applications.

- ☞ The radar screen can also be copied by pressing Ctrl-C.

2.3.2.2 Copy Aircraft List

This menu option copies the data in the aircraft list to the Windows clipboard in a tab delimited text form. It can then be pasted into standard word processors or spreadsheets.

- ☞ The aircraft list can also be copied by pressing Ctrl-L.

2.3.3 Radar Menu

- ☞ Most items on this menu can also be accessed via a pop-up menu by right-clicking on a radar screen.

2.3.3.1 Zoom In

This menu option increases the “magnification” of the view on the selected radar screen, so that it shows a smaller area but in greater detail.

- ☞ Toolbar button  Keyboard shortcut CTRL-I.

2.3.3.2 Zoom Out

This menu option is the opposite of Zoom In.

- ☞ Toolbar button  Keyboard shortcut CTRL-O.

2.3.3.3 Reset

This resets the view (i.e. screen centre, zoom, and view toggles) to the default for that view.

- ☞ Toolbar button 

2.3.3.4 Pan Screen

The four Pan Screen sub-menu options allow you to shift the centre point of the view, up, down, left and right.

- ☞ You can also pan using the “arrow” buttons on the toolbar or by pressing Ctrl-Alt-U for up, Ctrl-Alt-D for down, Ctrl-Alt-L for left or Ctrl-Alt-R for right.

2.3.3.5 Save Radar Screen View

This menu option allows you to save the settings of the currently selected radar screen under a name specified by yourself. Clicking on this menu option brings up the following prompt, showing the name of the *saved view* currently assigned to the selected radar screen. Every radar screen has a saved view associated with it. If you have not created any saved views then the screen will be associated with a view called *Default*.

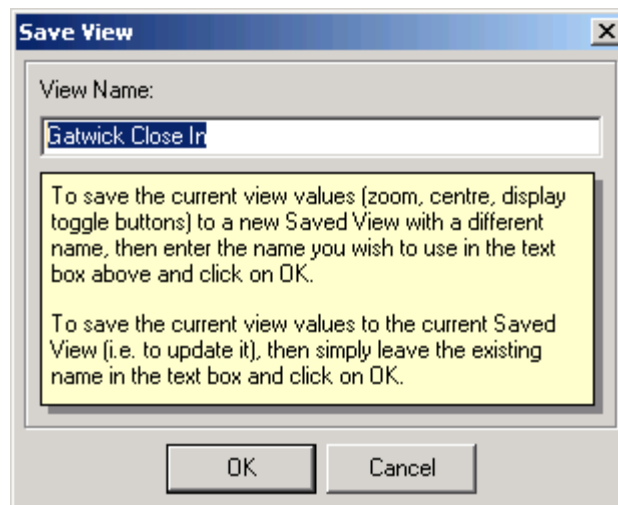


Figure 4: Save View dialog box

To update the named saved view with the current settings of the radar screen, simply click on OK. To save the current settings to a new saved view – and associate the radar screen with that new saved view – simply type in the name of the new view and then click on OK.

The following attributes are recorded in a saved view:

- The view centre.
- The zoom diameter.
- Whether Show All Trails is enabled.
- Whether Show Only Recent Trails is enabled.
- Whether Show Bearing & Distance is enabled.
- Whether Show Waypoints is enabled.
- Whether Show Range Rings is enabled.
- Whether Show Outlines is enabled.
- Whether Display Selected Only is enabled.
- Whether Display Interested Only is enabled.
- Whether the screen stays centred, tracks an aircraft, or tracks the coordinates given by an attached GPS unit.

- It is important to understand that a view is only updated if you click on Save Radar Screen View. If you select a saved view for a radar screen and then for example zoom in, the saved view will still be set to the previous value. If you then shut down the application and rerun it, the application will start up with the radar screen restored to that saved view, with the zoom diameter as saved in the saved view (i.e. as it was before you zoomed in). BaseStation is designed this way so that you can create a set of standard views for yourself and then zoom and pan around without fear that you will inadvertently “overwrite” your saved views.

- Toolbar button 

2.3.3.6 Add Radar Screen Tab

This menu item creates an additional radar screen tab, so that you can have two or more radar screens active and switch between them simply by clicking on the tabs that appear at the bottom of the screen. Each tab shows the name of the saved view that is currently assigned to the radar screen on that tab.

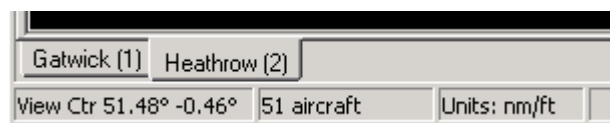




Figure 5: Radar Screen tabs

- Toolbar button  Keyboard shortcut Ctrl-A.
- You can switch between tabs from the keyboard by pressing Ctrl + Alt + [Tab Number]. In the example shown in the above screenshot, you could switch to the Gatwick tab by selecting Ctrl + Alt + 1.

2.3.3.7 Remove Radar Screen Tab

This menu option removes the currently selected tab. It is enabled only if you have more than one tab.

- Toolbar button 

2.3.3.8 Split Radar Screen

This splits the radar screen on the current tab into two side-by-side screens, each of which can be zoomed and panned independently and can be associated with a different saved view.

When a tab is split into two views, you can select between them simply by clicking inside them. The selected view will have a red border drawn around it.

If the current screen is already split, then this menu item will be called "*Merge Radar Screens*" and clicking on it will remove the right hand screen.

☞ Toolbar button  Keyboard shortcut Ctrl-S.

2.3.3.9 Show Elevation

This menu item causes a separate side elevation view to be displayed below the currently selected radar screen.

If the current screen already has the elevation shown, then this menu item will be called "*Hide Elevation*" and will cause the elevation to be removed.

☞ Toolbar button  Keyboard shortcut Ctrl-V.

2.3.3.10 Set View Centre and Bearing

This menu option brings up a dialog box that allows you to enter in a specific latitude and longitude that the currently selected radar screen is to be centred on. You can also set the bearing that you wish to be looking along. By default, this is north, so that the radar scope shows 0° at the top, and the elevation (if displayed) runs from west to east. Setting the bearing can be useful when you want to align the elevation with the glidepath that aircraft are following at an airport.

2.3.3.11 Centre on Waypoint

This menu option brings up a sub menu that lists your home position (the latitude and longitude you entered in as your actual position when the start-up configuration wizard was running) followed by all of the waypoints. Selecting any of these will cause the currently selected radar screen to be centred on the location of that point.

2.3.3.12 Set Elevation Upper/Lower Limit

By default, the upper limit of the elevation view is 50,000 feet with the lower limit being zero feet. This menu option brings up a dialog box that allows you to change them.

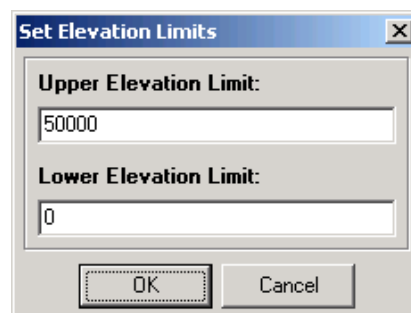


Figure 6: Set Elevation Limits Dialog Box

This is useful if you are zooming right in on an airport, watching aircraft that are just landing or taking off, and are thus very low.

- ☞ Aircraft whose altitude exceeds the elevation upper limit will not be displayed on the elevation view, even if they are visible on the scope. The same is true for aircraft whose altitude is lower than the elevation lower limit.

2.3.3.13 Display All Trails

Selecting this menu option causes the trail of every aircraft on the selected radar screen to be displayed, regardless of whether or not it has a tick in the *Show Trails* column of the Aircraft List. If you deselect this option, then trails will be shown only for those aircraft that have a tick in the *Show Trails* column of the Aircraft List.

- ☞ Toolbar button  Keyboard shortcut Ctrl-T.

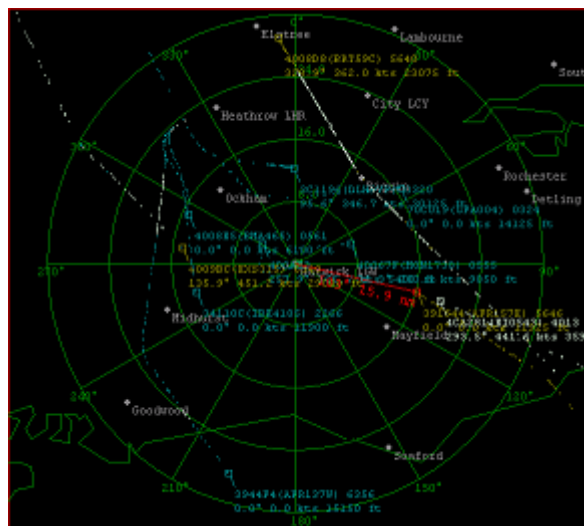


Figure 7: Display All Trails menu item/button selected

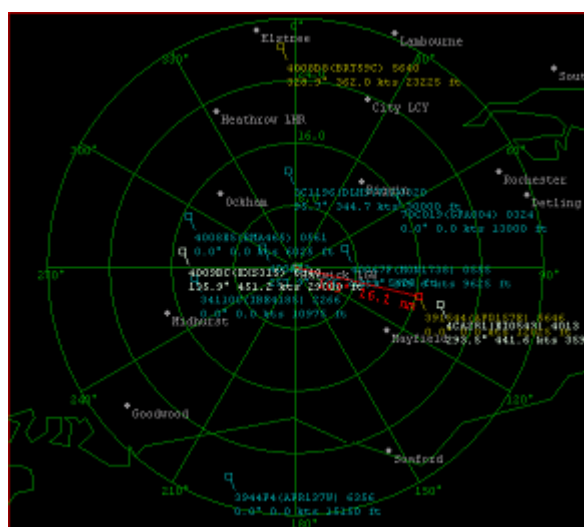






Figure 8: Display All Trails menu item/button not selected

2.3.3.14 Show Only Recent Trails

Selecting this menu option causes the aircraft trails to be limited to the last x seconds (by default to 60 seconds). The number of seconds to be displayed in this mode can be set under the *Aircraft Display* tab of the *Settings > Display Settings* menu. Deselecting this option will cause the full trail history to be displayed.

-  This option affects only those aircraft that are set to display their trails, either using the *Display All Trails* option above or the *Toggle Tracking on Selected Aircraft* option (see the *Aircraft* menu).
-  Toolbar button  Keyboard shortcut Ctrl-N.
-  Displaying the full trails can significantly increase the processing load on the computer needed to update the display.

2.3.3.15 Display Bearing & Distance

Selecting this menu option will cause a range and bearing line to be drawn on the selected Radar Screen.

☞ Toolbar button  Keyboard shortcut Ctrl-B.

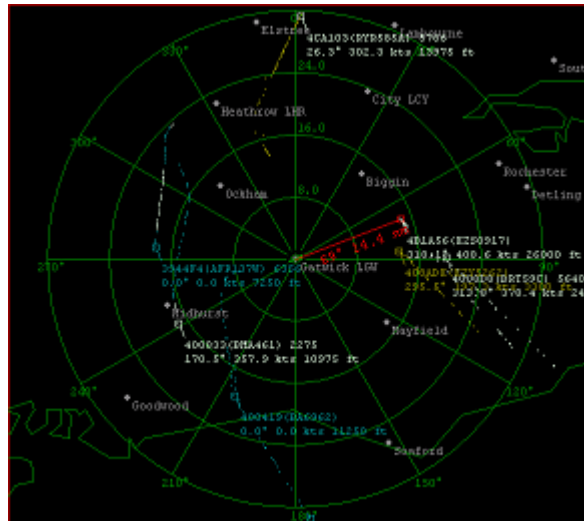


Figure 9: Display Bearing & Distance menu item/button selected

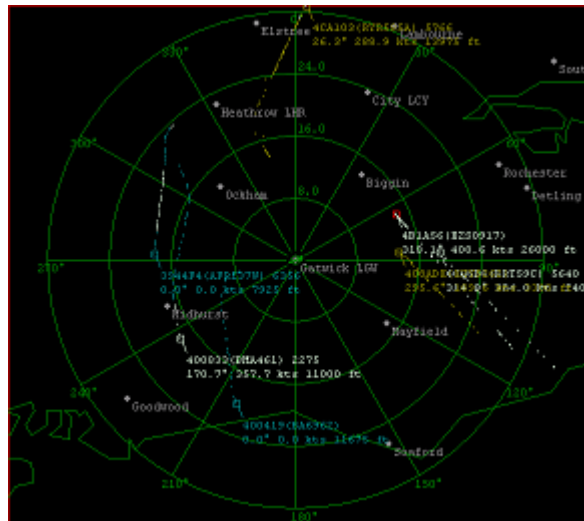


Figure 10: Display Bearing & Distance menu item/button not selected

2.3.3.16 Display Waypoints

Selecting this menu option will cause waypoints to be displayed.

☞ Toolbar button  Keyboard shortcut Ctrl-W.

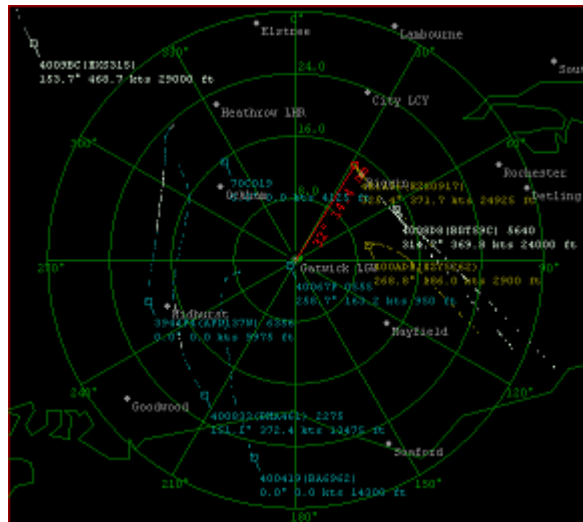


Figure 11: Display Waypoints menu item/button selected

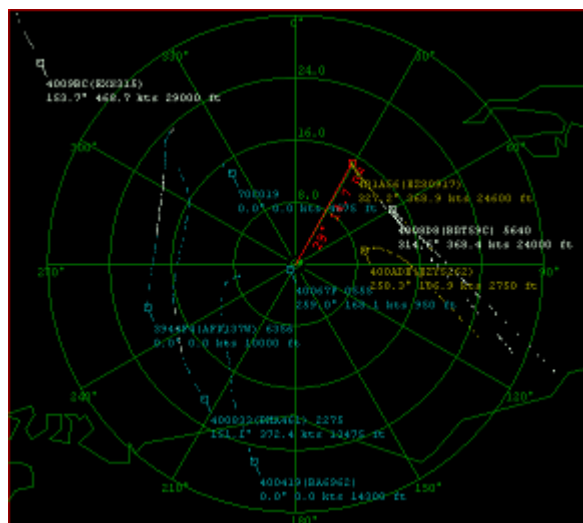


Figure 12: Display Waypoints menu item/button not selected

2.3.3.17 Display Range Rings

Selecting this option will cause range rings to be displayed.

☞ Toolbar button  Keyboard shortcut Ctrl-G.

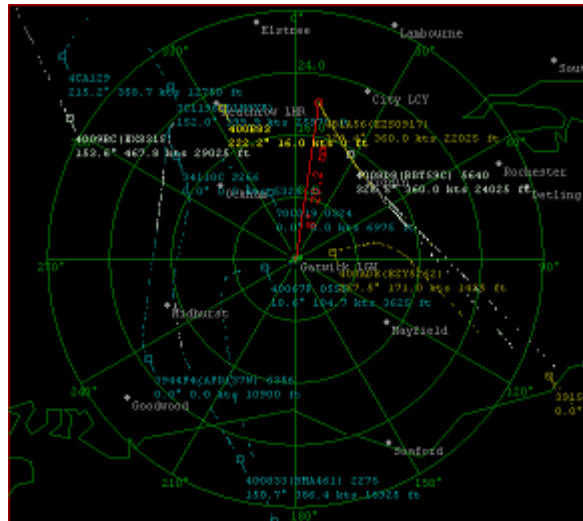


Figure 13: Display Range Rings menu item/button selected

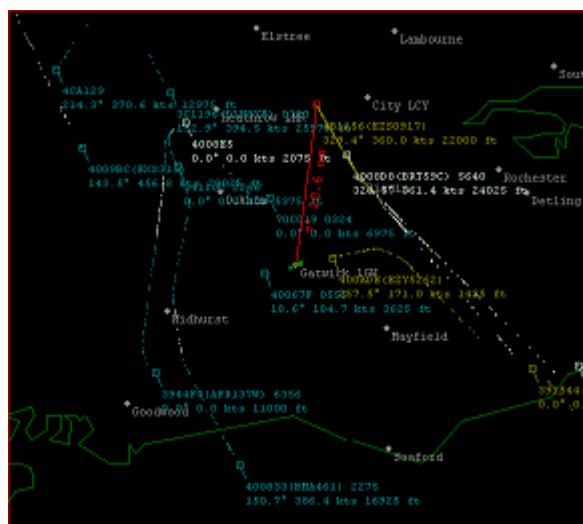


Figure 14: Display Range Rings menu item/button not selected

2.3.3.19 Display Selected Only

This option toggles whether the radar screen displays only the aircraft that is currently selected. When this feature is active you will see only one aircraft on the screen.

☞ Toolbar button  Keyboard shortcut Ctrl-Alt-S.

2.3.3.20 Display Interested Only

This option toggles whether the radar screen displays only those aircraft whose *Interested* field (in the database) is set to True.

☞ Toolbar button  Keyboard shortcut Ctrl-Alt-I.

2.3.3.21 Display Centre & Bearing Tracking

This menu item sets whether or not the radar screen will track the currently selected aircraft and, if so, what factors it will track.

If it is set to *None*, then the radar screen will stay set to the latitude, longitude and bearing that you have set for it.

If it is set to *Centre Only*, then the centre of the screen will always stay positioned on whichever aircraft is currently selected.

If it is set to *Centre & Bearing*, then the centre of the screen will always stay positioned on whichever aircraft is currently selected and – in addition – the bearing (direction) of the screen will be set to the current track of the aircraft. The aircraft will appear to be flying straight up the screen, with the outlines and waypoints wheeling around it whenever it turns.

☞ If the selected aircraft stops being displayed, and you don't select a new aircraft, the screen will stay on the last latitude, longitude and bearing received from the aircraft. Also, if you set this option back to *None*, the screen will still stay on the last latitude, longitude and bearing. In other words, changing back to *None* will just stop the screen centre and bearing changing when a new aircraft becomes selected, but it won't change the current screen centre and bearing. If you want to revert to the settings for the saved view, then you need to click on the *Radar > Reset* menu option (or alternatively, reselect the current view in the *Saved View* drop-down on the toolbar).

If it is set to *GPS*, then the centre of the screen will always stay positioned on the latitude and longitude coordinates supplied by an attached GPS receiver, assuming that the GPS unit is able to provide valid coordinates (i.e. that it has got a fix). This menu option is only visible if you have enabled the use of a GPS feed (by ticking the *Use GPS Feed* checkbox on the GPS tab of the *Hardware Settings* dialog box).

2.3.4 Aircraft Menu

2.3.4.1 Expanded All Aircraft List

This menu item duplicates the effect of the *Aircraft List Expand* button. Selecting it (so that it is displayed with it a check mark) expands the aircraft list (see Figure 2). Clicking on it again to deselect it (no check mark) returns the aircraft list to its normal width.

2.3.4.2 Show All Aircraft (Inc. Non Position)

This menu item toggles whether all aircraft are to be shown in the Aircraft List, regardless of whether or not position information has been received for them. By default, only those aircraft whose positions are known, and can therefore be plotted on the radar screen, are shown in the aircraft list.

2.3.4.3 Show Only Aircraft Marked Interested

This toggles whether the Aircraft List shows only those aircraft whose *Interested* field (in the database) is set to true. By default, all aircraft are displayed.

2.3.4.4 Display Full Info Window

This menu option displays a floating window that contains the details of whichever aircraft is currently selected.

The screenshot shows a window titled "Aircraft Details" with a yellow background. It contains several sections of information:

- Top Section:**
 - Flag:
 - Status: Signal Lost
 - Squawk: 5233
 - Lat: 51.536°
 - Altitude: 8,000 ft
 - Speed: 253.1 kts
 - Long: 0.415°
 - Vert. Rate: 0
 - Track: 153.7°
- Registration Data:**
 - ModeS (Hex): 4CA252
 - Registration:
 - Country: Ireland
 - Status:
 - Previous ID:
 - Current Reg Date:
 - First Reg Date:
 - De-reg Date:
- Manufacturer:**
 - Manufacturer:
 - Type:
 - Serial No:
 - Popular Name:
 - Aircraft Class:
 - Generic Name:
 - Engines:
- Ownership Status:**
 - Ownership Status:
 - MTOW:
 - C of A Cat.:
 - Total Hours:
 - Year Built:
 - C of A Expiry:
 - Registered Owners:
- UserNotes:**
 - A text area for user notes.

At the bottom right, there are three buttons: "Refresh Details", "Edit Details", and "Close".

Figure 17: Aircraft Details Window

This details in this window will be updated each second. You can leave this window visible while you select other aircraft – it will always display whichever aircraft is currently selected.

- ☞ An easier way to display this window is simply to double-click on either the aircraft's box on the Radar Screen, or on the aircraft's row in the Aircraft List.

Clicking on the Edit Details box brings up an edit dialog box that allows you to enter details for the aircraft.

- ☞ You can also edit an aircraft's details using the BaseStation Reporter application described later in this manual.

2.3.4.5 Sort By

This menu option allows you to set which column in the Aircraft List you wish to sort on.

- ☞ An easier way to do this is simply to click on the heading at the top of the column in the actual list itself. Clicking a second time on the same column heading will reverse the sort order (indicated by an upward or downward arrow on the column heading).

2.3.4.6 Columns

This menu option allows you to set which columns you wish to appear in the Aircraft List. By default, all columns are visible, but you can turn off those you do not need.

If a column name has a check mark next to it then that column is visible. Clicking on a checked item will deselect it and hide the column. Clicking on an unchecked column will select it and restore the column.

2.3.4.7 Toggle Tracking on Selected Aircraft

The selected aircraft is the one that is highlighted in the Aircraft List (by a solid blue bar) and in the Radar Screen (the aircraft box is drawn in red). This menu item toggles whether the selected aircraft is to be tracked (have its trail shown).

Aircraft that are set to be tracked have a tick in the *show trail* column in the Aircraft List. The value in that column is overridden however if the *Display All Tracks* option is set.

2.3.4.8 Refresh DB Data For Selected

Clicking on this menu option re-reads the database record for the currently selected aircraft.

- ☞ You would normally only need to do this if you've just updated the aircraft's registration data with BaseStation Reporter (or with another application) and want BaseStation to re-read the record and get the updated data.

2.3.4.9 Centre on Selected Aircraft

This centres the radar screen on the current position of the selected aircraft. (Note, the Radar Screen will then stay fixed on that particular point, not the aircraft itself).

- ☞ This option is useful if an interesting aircraft has appeared on your Aircraft List, but is not visible on the Radar Screen. Rather than zoom and pan around looking for it, you can simply centre on it.

2.3.4.10 Caption Position

The first four items on this sub-menu (Top Left, Top Right, Bottom Left and Bottom Right) allow you to set the radar screen caption for the selected aircraft to a different position relative to the aircraft. This is useful when two aircraft are flying close to each other and their captions are overlapping.

The last two items (Rotate Anti-Clockwise and Rotate Clockwise) change the caption position of the selected aircraft to the next position in the indicated direction. For example, if the caption is currently Top Left and you click on Rotate Clockwise, it will change to Top Right.

- ☞ You can easily arrange all the captions on the screen by using the keyboard shortcuts F9 and F10 to cycle through the aircraft, and using F11 and F12 to rotate the captions clockwise and anti-clockwise.

2.3.4.11 Refresh DB Data For All

This command is similar to *Refresh DB Data For Selected* except that it refreshes the data for all of the aircraft in one operation.

2.3.4.12 Select Previous Aircraft

This menu option changes the selected aircraft to be the first aircraft before the current one in the aircraft list that is broadcasting its position (i.e. has an aircraft symbol).

- ☞ It is quicker to use the keyboard shortcut (the F9 key) to cycle backwards through the aircraft displayed on the screen.

2.3.4.13 Select Next Aircraft

This menu option is identical to the *Select Previous Aircraft* option, except that it cycles forwards through the aircraft list, and its keyboard shortcut key is F10.

2.3.5 Settings Menu

2.3.5.1 Display Settings

This menu option brings up the *Display Settings* dialog box:

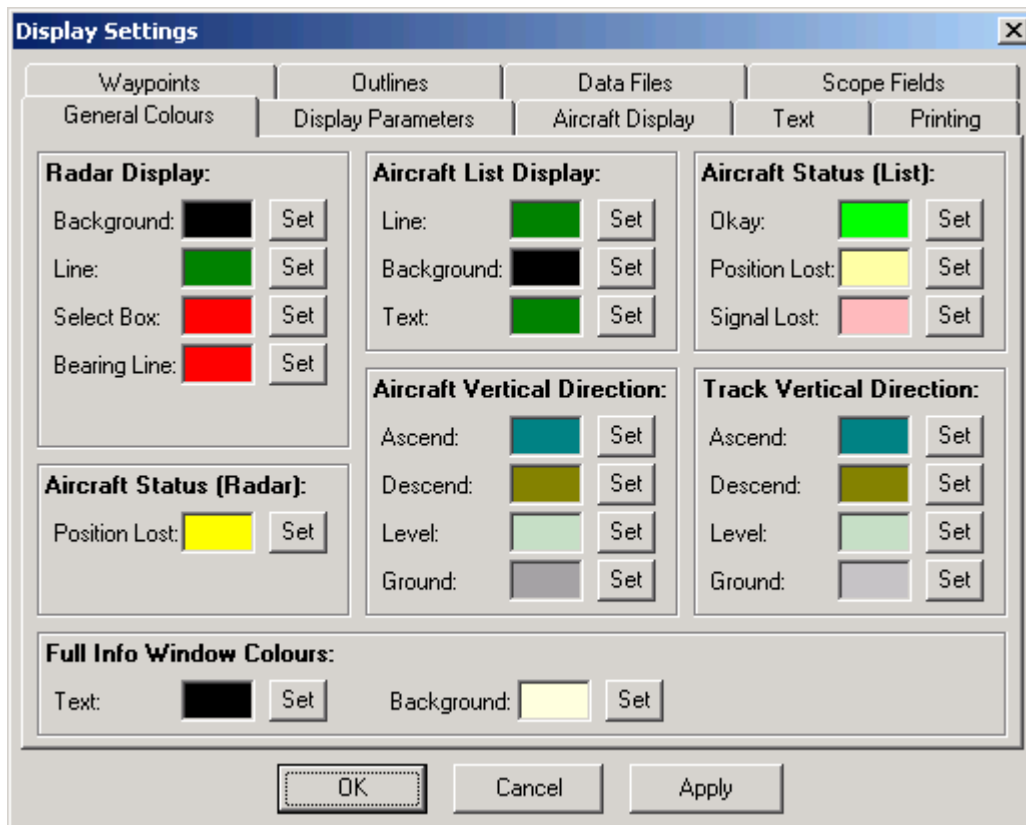


Figure 18: The Display Settings dialog box (General Colours tab)

The settings on the **General Colours** tab concern the colours used by the application. If you want to experiment with colours, then clicking the Apply button saves the updated colours – which will cause the application to start using those colours – without exiting the dialog box.

Radar Display: These set the colours used on the Radar Screen.

Line sets the colour used in the Range Rings (and the horizontal lines in the Elevation view) as well as the text associated with the Range Rings.

Select Box is the colour used both for the box around a selected Radar Screen as well as the colour used to display a selected aircraft.

Bearing Line is the colour used to display the bearing and range line for the selected aircraft.

Aircraft List Display: These set the colours used in the Aircraft List.

Aircraft Status (Radar): *Position Lost* sets with which colour is used to display aircraft on the radar screen if the *Position Lost* timeout

period has been exceeded. The default colour is yellow. For more information about the timeout see the description of the *Settings > Data Settings* menu item.

Aircraft Status (List): *Okay*, *Position Lost* and *Signal Lost* define the colours used for the aircraft symbol in the *Status* column of the Aircraft List. For more information about the Aircraft Status see the description of the *Settings > Data Settings* menu item.

Aircraft Vertical Direction: These set the colours used to display aircraft on the Radar Screen, including the box representing the location of the aircraft, the caption text, and the line connecting the two. Aircraft are coloured according to whether they are ascending, descending, flying level, or on the ground. However, if no signal is received for the *Position Lost* timeout period (by default, this is 30 seconds), the aircraft changes to the colour set by the *Position Lost* colour setting – regardless of whether it was ascending, descending, level, or on the ground.

Track Vertical Direction: These settings define the colours used for the aircraft trails. These are similar to the *Aircraft Vertical Direction* settings, except that there is no *Position Lost* colour. This is because each dot in the track represents a time when a position was received.

Full Info Window Colours: These settings select the colours used in the Full Info Window.

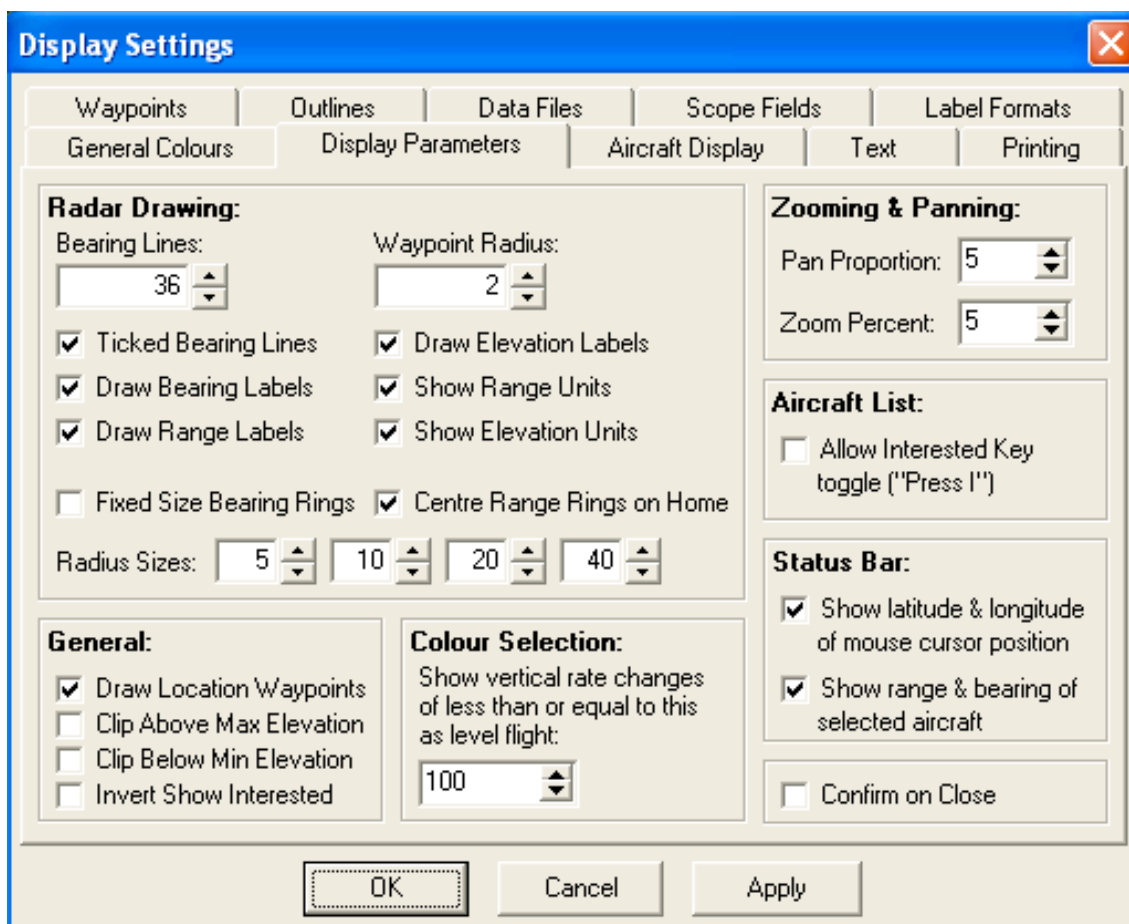


Figure 19: The Display Settings dialog box (Display Parameters tab)

The **Display Parameters** tab allows the user to configure various aspects of BaseStation's screens.

Radar Drawing:

Bearing Lines determines how many segments the radar display will be divided into by the range rings. The minimum is four, which gives four quadrants.

If *Ticked Bearing Lines* is checked then small ticks are drawn instead of the radial lines.

If *Fixed Size Bearing Rings* is checked, then the bearing rings are drawn at fixed distances from the centre of the rings, rather than being sized to fit the view. By default, fixed size rings will be drawn at radii of 5, 10, 20 and 40 nautical miles, but this can be changed using the *Radius Sizes* spin edit controls.

If *Centre Range Rings on Home* is checked, then the range rings are centred on the currently selected location (i.e. home), rather than being centred on the view.

Waypoint Radius controls the size of the dots that are drawn for Waypoints.

General:

If *Draw Location Waypoints* is selected then a waypoint is drawn at each location defined by the Locations Manager (this is an easy way of having a waypoint drawn at your home position).

The *Clip Above Max Elevation* and *Clip Below Min Elevation* options will, if set, cause the radar screen to display only those aircraft whose altitude is below and above the maximum and minimum altitudes defined in the Set Elevation Limits dialog box.

If *Invert Show Interested* is checked, the the Display Only Interested and Show Only Interested buttons work in the opposite way – that is, selecting them will cause only aircraft that you have **not** marked as interested to be displayed.

Zooming & Panning: These parameters determine how far the screen moves sideways while panning (decreasing the number will increase how far it pans), and by which percentage of the existing view it zooms in each step when zooming in and out.

Colour Selection: Aircraft flying notionally level sometimes make slight up and down movements. To avoid displaying “rainbow coloured” trails, changes of less than the configured amount are ignored when determining which colour to use for the next dot in the trail.

Status Bar:

If *Show latitude and longitude of mouse cursor position* is checked, then a panel appears on the status bar at the bottom of the application window, that shows the latitude and longitude of the position on the radar screen that the mouse pointer is currently over.

If *Show range and bearing of selected aircraft* is checked, then a panel on the status bar appears that shows the range and bearing of the currently selected aircraft. The data displayed is the same as that displayed on the radar screen when the *Display Bearing & Distance* option is selected, but the status bar be easier to read when the display is cluttered.

Aircraft List:

If *Allow Interested Key Toggle* is set to true, then you can toggle the status of an aircraft’s Interested field by simply selecting it in the Aircraft List and then pressing the I key. This setting is set to false by default in order to guard against inadvertent editing of the database.

Confirm on Close: If this box is checked then you will be asked “Do you really want to shut BaseStation down?” each time you close the application.

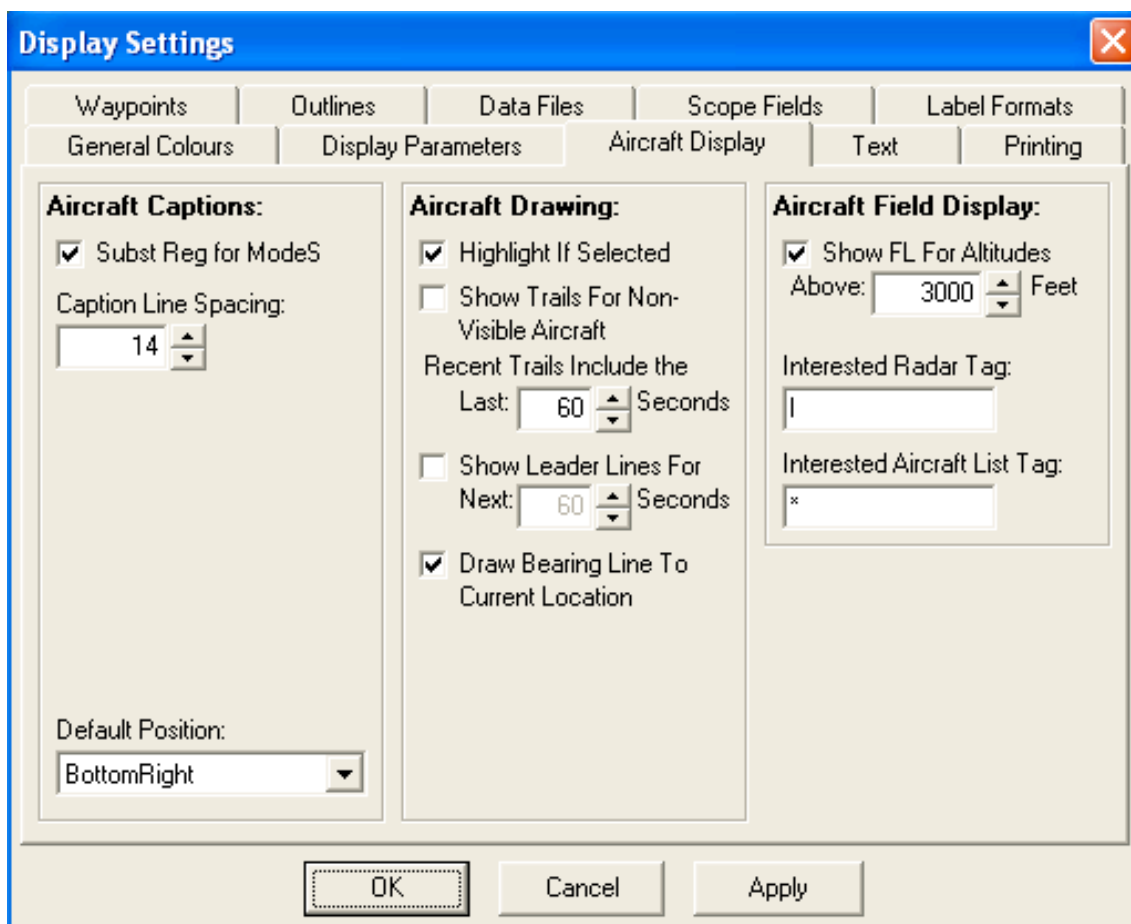


Figure 20: The Display Settings dialog box (Aircraft Display tab)

The **Aircraft Display** tab allows configuration of the way aircraft are displayed on the screen.

Aircraft Captions: These settings configure which data items are displayed in the caption beside each aircraft on the radar screen.

Subst Reg for ModeS is a special case that can be used where the ModeS field has been set to be displayed (using the Scope Fields tab). If checked, then the aircraft's radar screen caption will show the ModeS code where it does not have a registration for that aircraft, but the registration instead where it does.

- ☛ This means that if you have this option checked, you should set the Registration field (in the Scope Fields tab) to **not** be displayed – otherwise you'll end up with Registration being shown twice.

Caption Line Spacing allows you to set the gap between each line of text in the radar caption.

Default Position sets where the caption will, by default, be drawn on the radar screen relative to the aircraft.

Aircraft Drawing:

Highlight If Selected sets whether the aircraft that is currently selected (this is also shown by a blue highlight bar in the Aircraft List)

should be highlighted on the Radar Screen by being drawn as a red box (rather than whichever colour would indicate its ascending/descending/level/ground status). This is the default behaviour.

Show Trails For Non Visible Aircraft sets whether or not trails are displayed for aircraft that are no longer visible. By default, if an aircraft disappears from the screen, either by flying off the edge, or if no message is received from it for 35 seconds (or the time configured using *Settings > Data Settings*), then the trail is also removed from the screen. The trail will only reappear if the aircraft itself reappears. However, if you check this setting, then the trail will continue to be shown until the aircraft is removed from the Aircraft List (which by default happens if no message is received for a further 5 minutes).

Recent Trails Include The Last x Seconds allows you to define the number of seconds to be included in the most recent portion of an aircraft trail, whenever the *Show Only Recent Trails* mode is set. Note that this only applies if the aircraft set to have its trail drawn, or if *Display All Trails* is selected.

Show Leader Lines For Next x Seconds allows you to configure BaseStation to draw lines ahead of an aircraft, showing its predicted path over the selected period. This is a demonstration feature, to be implemented more completely in a future release of BaseStation.

Aircraft Field Display:

The *Show FL For Altitudes Above x Feet* control will, when set, cause altitudes above that level to be shown as flight levels rather than in feet. For example, an altitude of 8500 feet would be shown as FL85.

The *Interested Radar Tag* and the *Interested Aircraft List Tag* configure which characters are used if the *Interested* field is displayed on the radar screen or in the Aircraft List respectively.

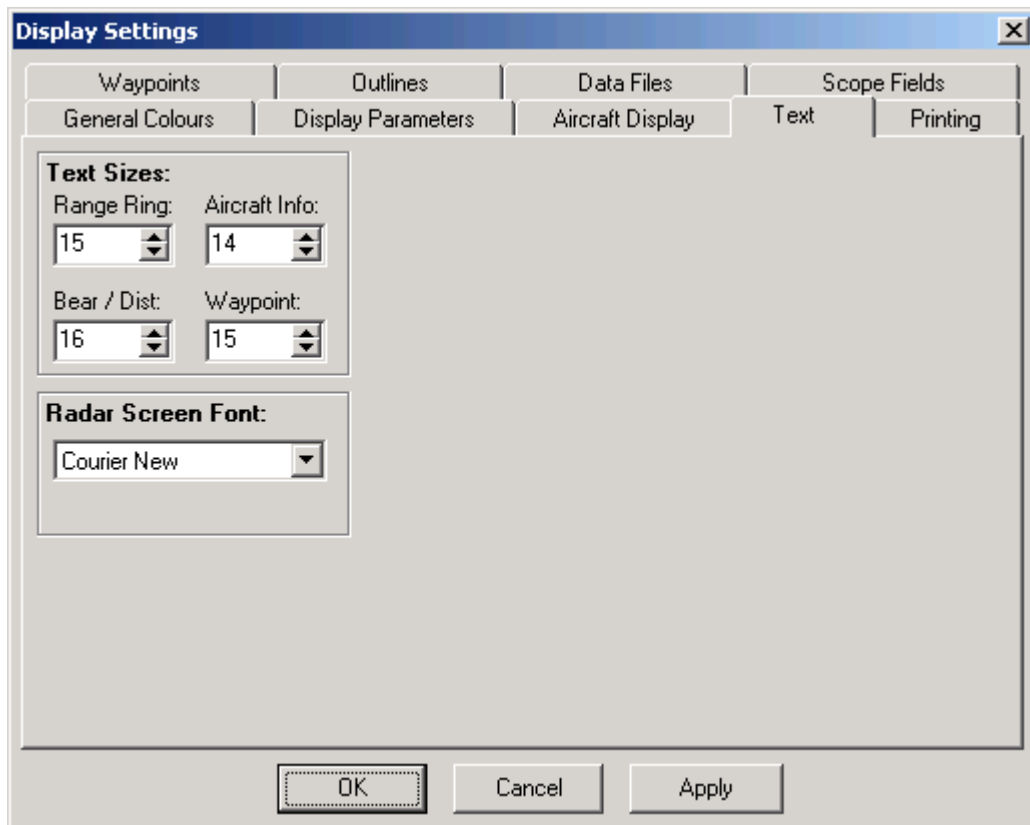


Figure 21: The Display Settings dialog box (Text tab)

The **Text** tab allows configuration of certain text displayed on the screen.

Text Sizes: These boxes set the size of various categories of text that are written to the radar screen.

Radar Screen Font: This determines which font is used to draw the text on the radar screen.

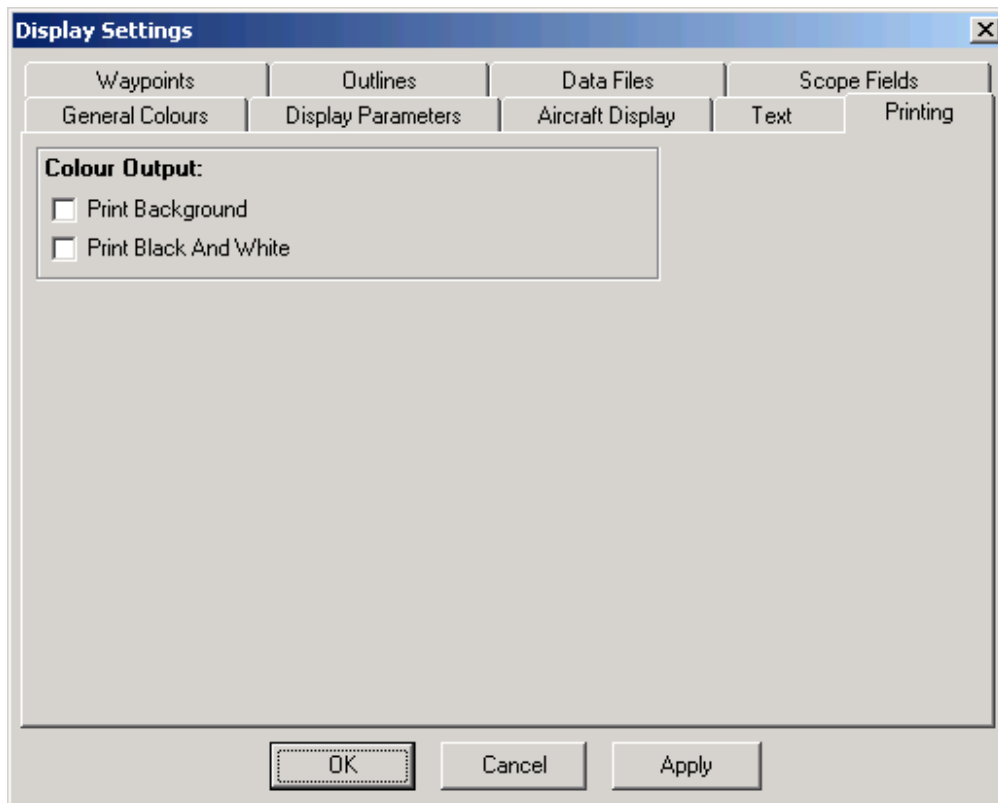


Figure 22: The Display Settings dialog box (Printing tab)

The **Printing** tab determines how radar screen images are printed.

Print Background sets whether or not the background (which by default is black) is printed when you print the radar screen. Leaving this box unchecked will generally result in less ink or toner being consumed by the printer.

Print Black and White sets whether the radar screen is printed in black and white instead of colour.

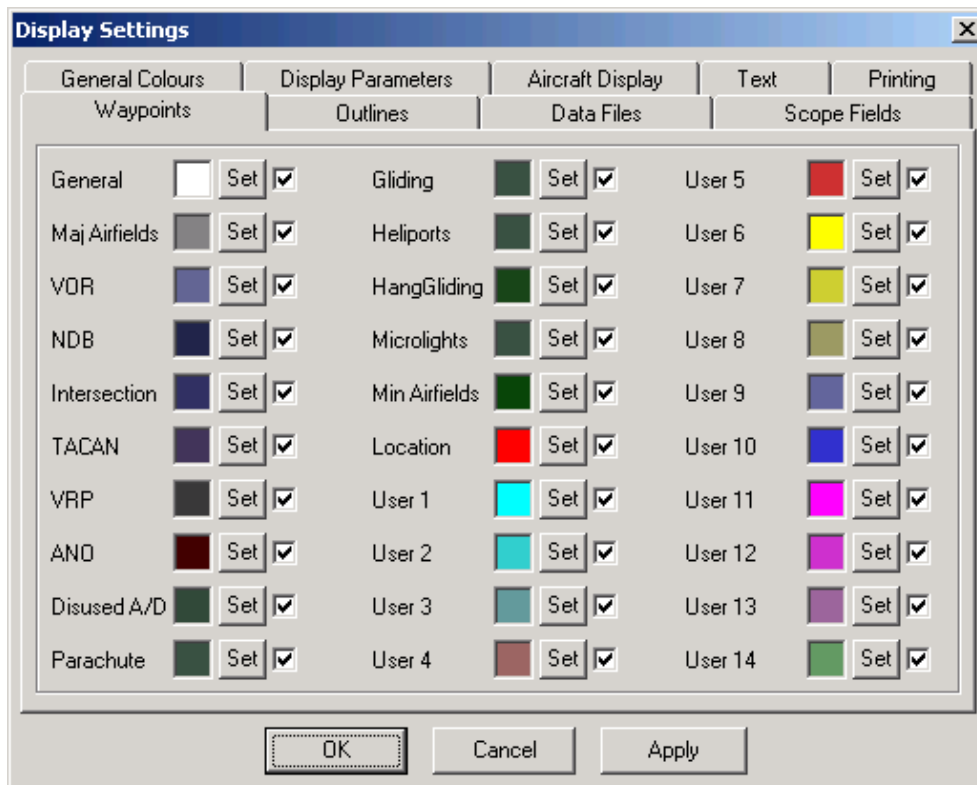


Figure 23: The Display Settings dialog box (Waypoints tab)

The **Waypoints** tab allows you to set the colours used for each type of waypoint. It also allows you to select which types of waypoints you wish to be visible (check the checkbox to make them visible, uncheck it to hide them).

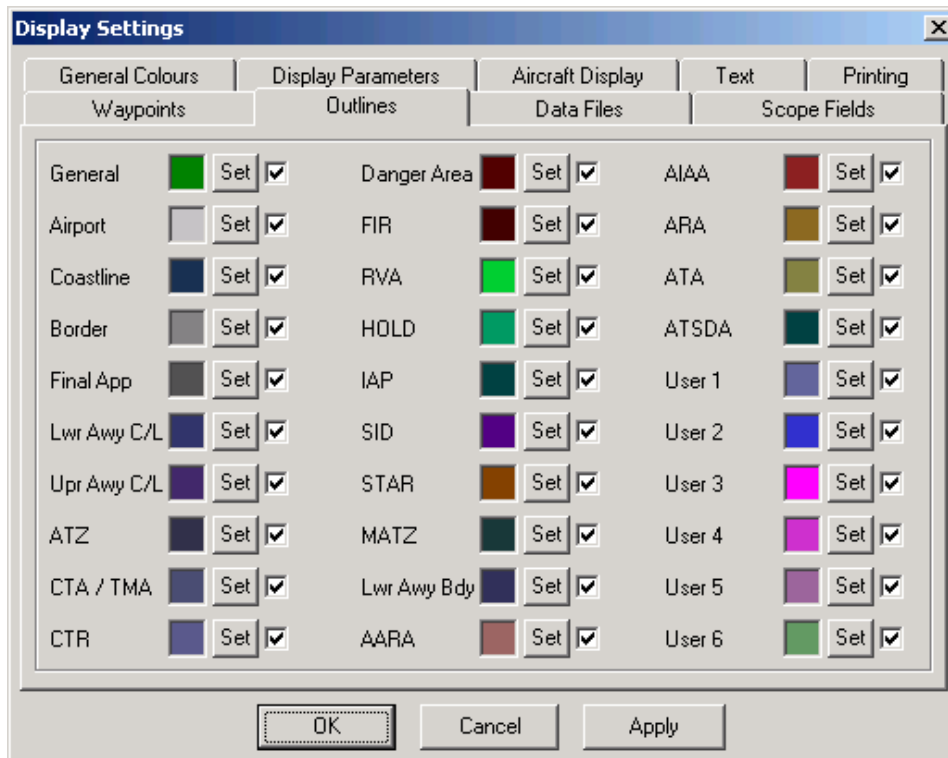


Figure 24: The Display Settings dialog box (Outlines tab)

The **Outlines** tab lets you set the colours used for each type of outline. It also allows you to select which types of outlines you wish to be visible (check the checkbox to make them visible, uncheck it to hide them).

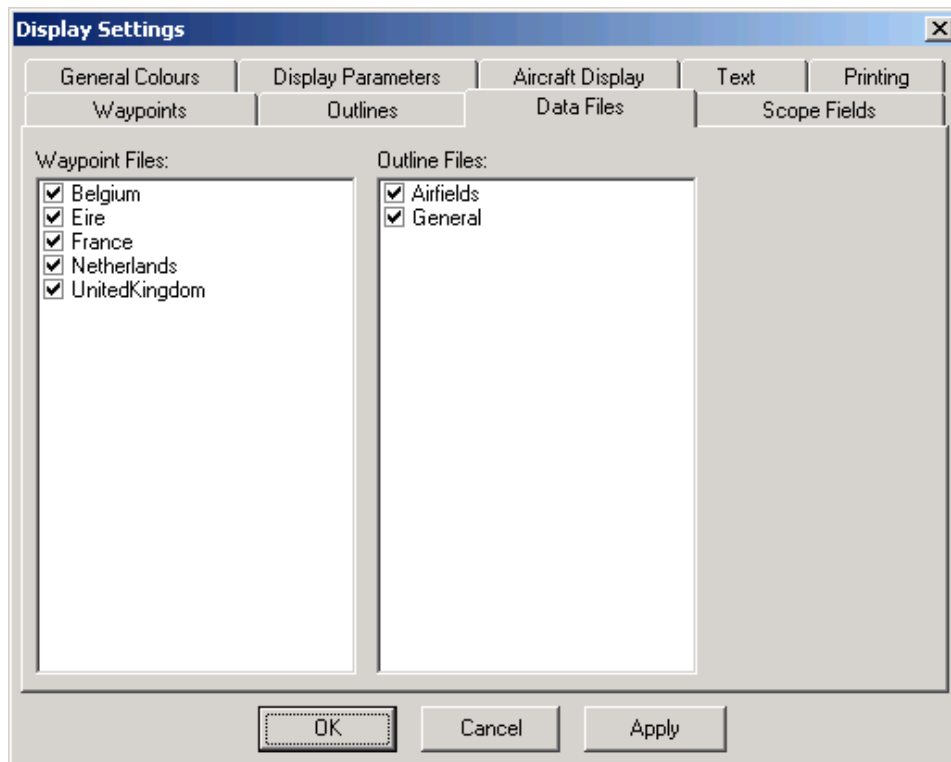


Figure 25: The Display Settings dialog box (Data Files tab)

The **Data Files** tab displays the outline and waypoints files that are in the folders *(Installation path)\Outlines* and *(Installation path)\Waypoints* respectively, where *(Installation path)* denotes the folder where BaseStation is installed. The tab allows you to select which specific files are loaded.

To stop a file being loaded, simply uncheck the checkbox next to its name. When you click on OK or Apply, the system will purge and reload the waypoint or outline lists, loading only those files you have set to be loaded.

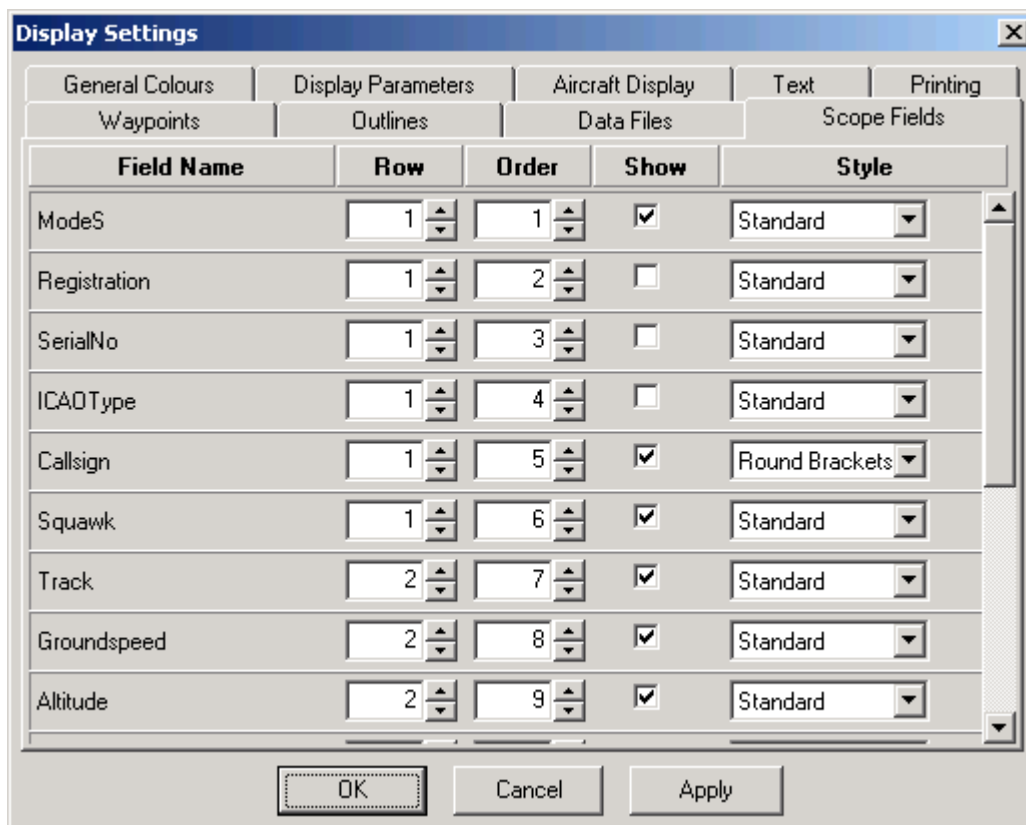


Figure 26: The Display Settings dialog box (Scope Fields tab)

The **Scope Fields** tab gives you complete control over the fields that are shown in the aircraft tags on the radar screen.

For each field that can be displayed in the caption, you can set four settings:

- **Show:** This sets whether or not the field will be displayed. If this checkbox is not checked, then the field will not be displayed the other three settings for this field are ignored.
- **Row:** This setting determines which row of the tag the field will appear in. By default, there are two rows, but you can have up to five. Row must be set to a value between 1 and 5.
- **Order:** This setting determines the order in which fields are displayed on a row (whereas the *Row* parameter sets which row they are displayed on).
- **Style:** This sets the style in which the field is displayed. If set to the default (Standard) then the field value is simply copied into the caption. Alternatively, you can opt to have the value enclosed by brackets, have dashes or bars before or after it, and so on.

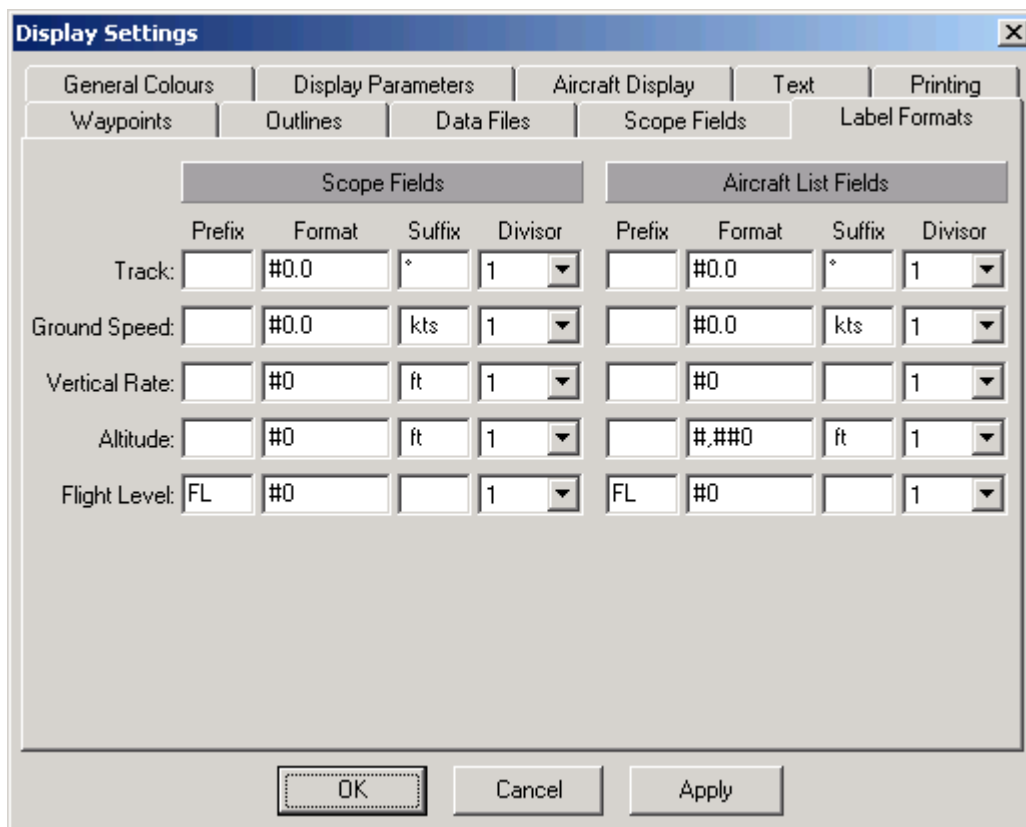


Figure 27: The Display Settings dialog box (Label Formats tab)

The **Label Formats** tab allows you to set the ways in which field values are displayed on the radar scope and in the aircraft list. This enables you to have as much, or as little, detail as you wish, which can be a great help if the radar scope is getting cluttered.

For example, by default the setting for the ground speed field on the radar scope is:

Prefix: [blank]
 Format: #0.0
 Suffix: kts
 Divisor: 1

This will cause the radar scope to display track values in the form: **157.3 kts** (note that there is a space before the kts in the Suffix edit box).

If you changed it to the following:

Prefix: G
 Format: #0
 Suffix: [blank]
 Divisor: 1

it would display values in the form: **G157** (note that in this example, there is no space after the G).

You can use the divisor setting to modify the value displayed. If you changed the divisor of the above example to 10, for example, the value displayed would change to **G16**.

- ✍ The Prefix and Suffix fields can contain any text. The Format field however should contain only the characters "#", "0", ",", and ".".

2.3.5.2 Data Settings

This menu option brings up the Data Settings dialog box:

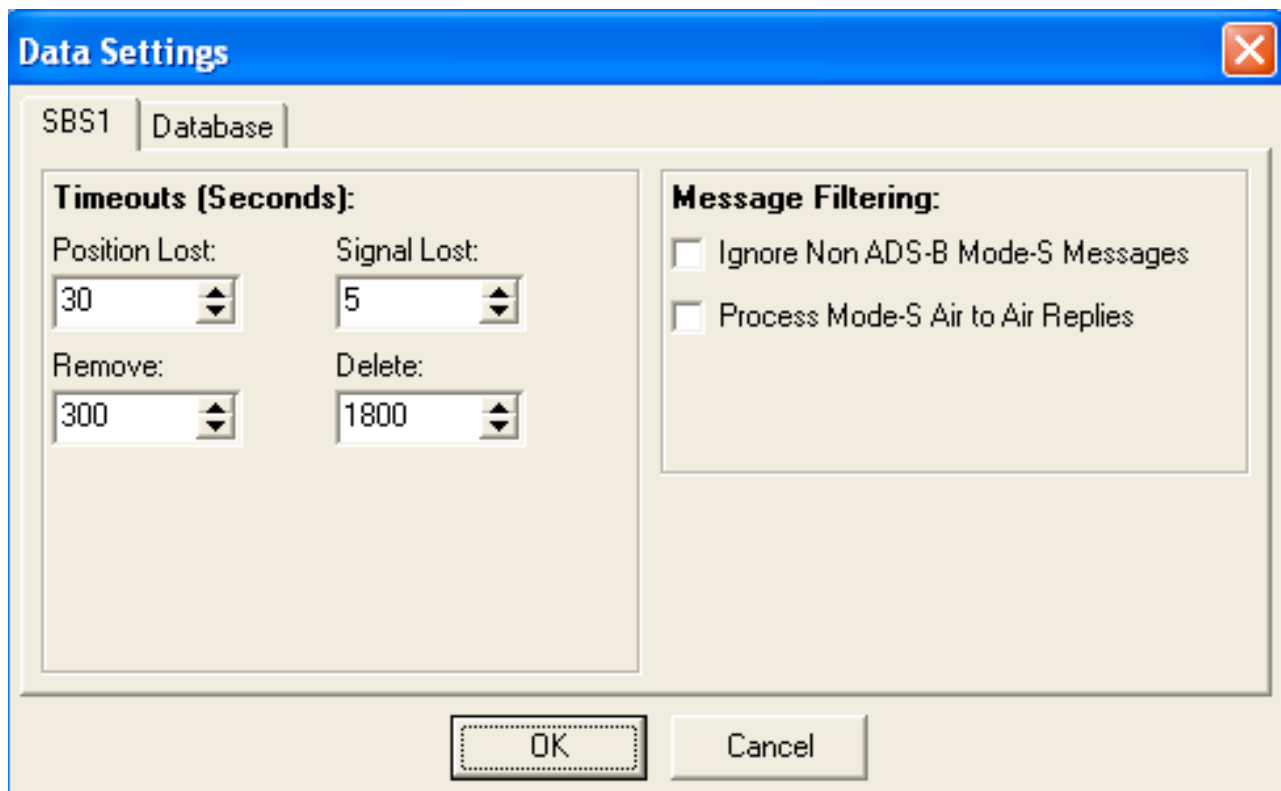


Figure 28: The Data Settings dialog box (SBS-1 tab)

Message Filtering:

Ignore Non ADS-B Mode-S Messages: By default BaseStation receives and processes both ADS-B and non-ADS-B Mode-S messages. However, you can turn off the processing of non-ADS-B messages by checking the *Ignore Non ADS-B Mode-S Messages* checkbox.

Process Mode-S Air to Air Replies: **SBS-1eR**

Enables forwarding by the SBS-1 of Mode-S Air-to-Air Surveillance Replies (TCAS Replies). As these contain altitude information, this may enable BaseStation to display the altitude of non-ADS-B but Mode-S equipped aircraft, even when they are outside the coverage of Mode-S radar stations.

- ✍ Enabling this feature will significantly increase the amount of data transmitted from the SBS-1eR to the PC, and hence the bandwidth required when connecting over a network.

- ☞ This feature is available currently available only on the SBS-1eR and will also require a firmware update if the firmware build number displayed by the *Help > About BaseStation* menu is less than 517.

Timeouts (Seconds): These parameters dictate how the application responds when it stops receiving messages from an aircraft.

If a preset number of seconds (configured using the *Position Lost* box) has elapsed since the time the last message was received, the aircraft changes to a state of "position lost", and is shown as yellow (by default) on both the Radar Screen and in the Aircraft List.

If a further period (set by the *Signal Lost* box) elapses without receiving a message, the aircraft changes to a state of "signal lost" and is removed from the Radar Screen and shown as red in the Aircraft List.

If a further period elapses without receiving a message (configured in the *Remove* box) then the aircraft is removed from the Aircraft List.

When a final period (set by the *Delete* box) has elapsed, the aircraft's data is purged completely from memory.

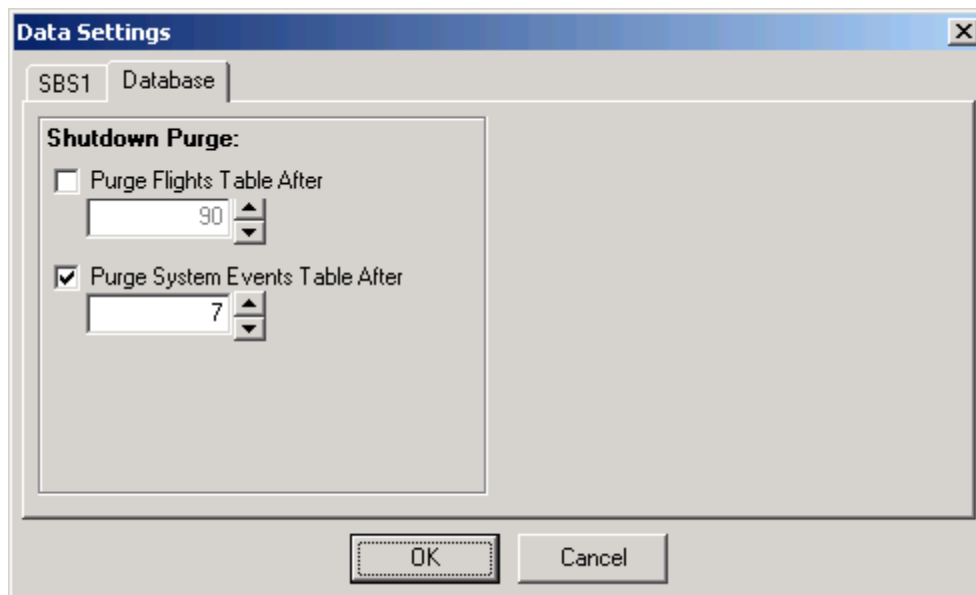


Figure 29: The Data Settings dialog box (Database tab)

On the **Database** tab, BaseStation can be set to purge (delete) data over a certain age each time it shuts down. It can do this for both the *Flights* and *System Events* tables. By default, it leaves the *Flights* table alone, but will delete all records in the *System Events* table that are more than 7 days old.

2.3.5.3 Hardware Settings

This menu option brings up the *Hardware Settings* dialog box:

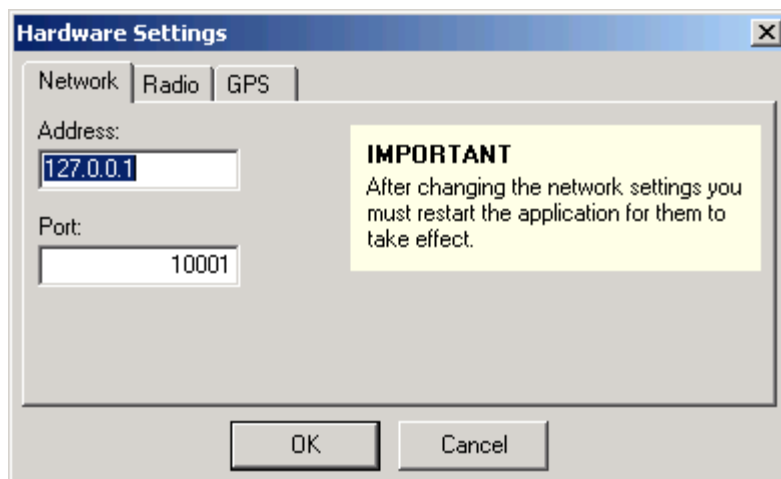


Figure 30: The Hardware Settings dialog box (Network tab)

The **Network** tab is relevant only if you have an SBS-1eR, an SBS-1e or an SBS-1EM add-on Ethernet module for your SBS-1. If you do, then enter the IP address it has on your network and the port that you use to connect to it (which will usually be 10001).

- ☞ After changing the IP address or port, is necessary to restart BaseStation for the new setting to take effect.

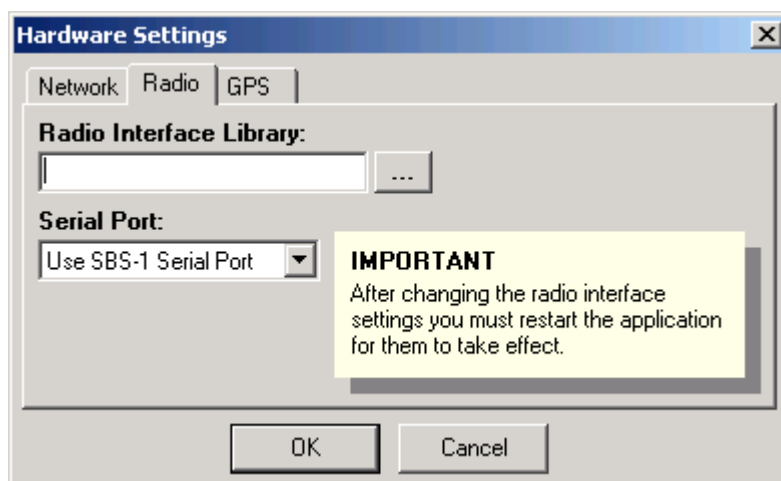


Figure 31: The Hardware Settings dialog box (Radio Tab)

The **Radio** tab is used to configure the external radio interface (see chapter 3).

- ☞ The external radio interface will not work unless your SBS-1eR, SBS-1e or SBS-1 has the external radio firmware option installed. This option may be purchased from the Kinetic e-store.

The *Radio Interface Library* setting allows you to select a *BaseStation Interface Unit* (.BIU) file that implements an interface to the radio (scanner) that you use.

- ☞ Selecting an interface file will cause the Radio menu to appear in the main application menu bar.

The *Serial Port* drop down box allows you to select between having the external scanner connected to your PC's serial port (the standard option) and the SBS-1eR, SBS-1e or SBS-1's serial port (useful when your PC does not have a serial port).

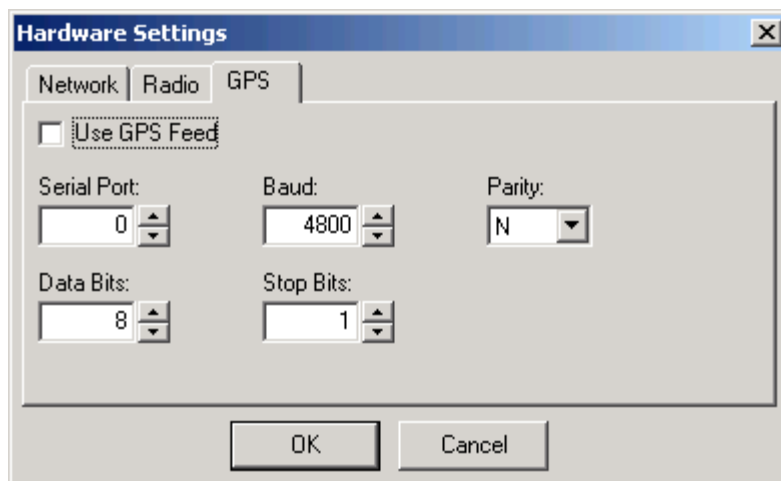


Figure 32: The Hardware Settings dialog box (GPS tab)

The **GPS** tab allows you to configure the system to use an attached GPS unit to provide location data to BaseStation.

- The GPS unit must output standard NMEA data to a serial port on the PC (or a USB port configured to emulate a serial port).

To enable the use of GPS, simply check the *Use GPS Feed* checkbox, and then enter the appropriate values into the edit fields below.

Once this value is checked, a GPS status panel will appear on the status bar (you have to restart BaseStation for this to occur), and a *GPS Status* menu option will become visible in the *Settings* menu.

Whenever the GPS unit is providing valid data (i.e. it has a fix – see the *GPS Status* menu option for further details), the latitude and longitude coordinates that it is outputting (i.e. your current location) will be used in preference to the coordinates of the currently selected location. This applies when you have opted to centre the range rings on the current location (GPS location will be used instead) and when you have opted to have range and bearing lines drawn from the current location (GPS location will again be used).

2.3.5.4 Install Firmware Option

Clicking on this menu item brings up the following dialog box:

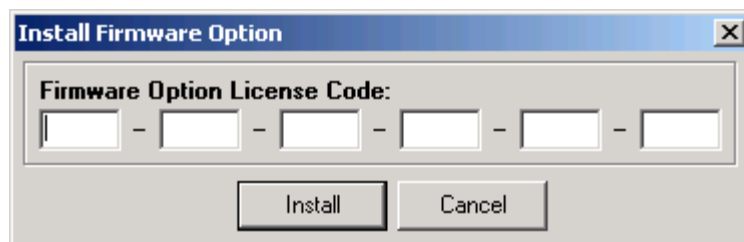


Figure 33: The Install Firmware Option dialog box

This menu item is used to enter Firmware Option License Codes into the SBS-1eR to activate features that have been purchased separately. Instructions for doing this will be included in any such feature packages that you purchase.

2.3.5.5 Data Source

This menu item has two options: *Use USB* and *Use Network*. You should select *Use Network* only if you have an SBS-1eR, an SBS-1e or an SBS-1EM add-on Ethernet module for your classic SBS-1, and have configured its use via the Network tab of the Hardware Settings dialog box. If all of these conditions apply, then you can toggle between using USB and using the network by clicking on the corresponding option in this sub-menu.

After changing from USB to Network (or vice-versa), is necessary to restart BaseStation for the new setting to take effect.

2.3.5.6 Locations Manager

Clicking on this item brings up the following dialog box:

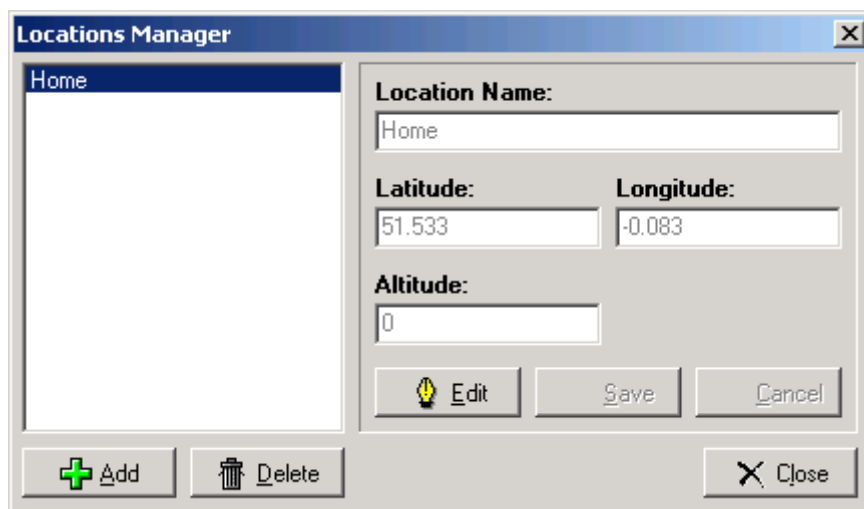


Figure 34: The Locations Manager dialog box

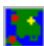
The Locations Manager allows you to define the positions from which you intend to use BaseStation. By default, you will have one location defined called "Home", which will have the latitude and longitude value that you entered into the Startup Configuration wizard.

If you use BaseStation in a different location, then you can either edit the values of your Home location or create an additional location.

To add a new location, simply click on Add, enter the location name, the latitude, the longitude and the altitude (can be zero) and then click on save. To edit an existing location, select it, click on edit, change the required details, and click on save. To delete a location, select it and click on delete.

- You cannot delete a location that has been used while you were recording data. This is because there are flights in the database linked to that location. You can only delete a location if you have not yet used it.

For more details on location, including how to set the current location, please see the section on the Current Location Selector in the Toolbar chapter.

- ☞ The Locations Manager can also be opened by clicking on the toolbar button 

2.3.5.7 GPS Status

This menu item appears only if BaseStation has been configured to receive position data from an external GPS unit attached on a serial port (See Hardware Settings Menu, GPS tab). Clicking on this item brings up the following dialog box:

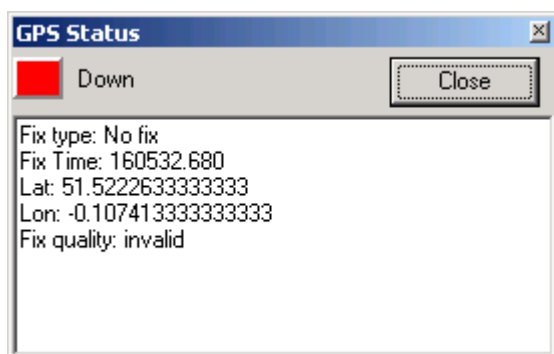


Figure 35: The GPS Status dialog box

This floating window shows the current status of the GPS connection. It can have three states:

Off: This indicates that BaseStation is not receiving any messages from the GPS unit (for example if it is turned off or disconnected). This is shown as dark red in both this dialog box and on the status bar.

Down: This means that BaseStation is receiving messages from the GPS unit, but that those messages are telling BaseStation that the GPS unit is not currently able to obtain a fix to determine its location. This is shown as bright red in both this dialog box and on the status bar.

Up: This means that the GPS has informed BaseStation that it is now fully operational and delivering valid coordinates. This is shown as bright green in both this dialog box and on the status bar.

2.3.5.8 Toolbars

This menu item brings up a sub-menu allowing you to hide or show individual parts of the toolbar.

2.3.5.9 Status Bar

This menu option allows you to hide or show the status bar.

2.3.5.10 Sidebar

This menu option allows you to hide or show the sidebar.

2.3.5.11 Reload

Reload Outlines causes all outlines to be reloaded. You would normally only do this if you have modified an existing outline file or added a new one.

Reload Waypoints causes all waypoints to be reloaded. You would normally only do this if you have modified an existing waypoint file or added a new one.

2.3.6 Help Menu

2.3.6.1 Reference Manual

This menu option displays the PDF file containing the BaseStation Reference Manual (this document).

2.3.6.2 Release Notes

This menu option displays the release notes for installed version of the BaseStation application.

2.3.6.3 BaseStation Websites

This submenu can launch (in your default browser) various BaseStation related web sites that can be used to get help and information about the BaseStation software and SBS-1eR products.

2.3.6.4 User Websites

This submenu can launch websites that are not connected with the BaseStation software but might be of interest to users.



Toolbar button

2.3.6.5 About BaseStation

This menu option launches an *About* dialog box that displays various information, including the version number of your BaseStation software and the firmware version installed in your SBS-1eR, SBS-1e or SBS-1. It also lists any firmware options you have installed, such as the External Radio option (Option 1).

2.4 Aircraft List

2.4.1 What The Aircraft List Shows

The Aircraft List has an entry for each aircraft that BaseStation is currently receiving messages from.

The **Status** column shows the transmission status of the aircraft by means of colour-coded symbols. Green indicates that transmissions are being received from the aircraft. Yellow indicates that more than 30 seconds have gone by without receiving a transmission. Red indicates that 35 seconds have gone by without receiving a transmission.




☞ These timeouts can be changed using the *Settings > Data Settings* menu item. The colours can be changed using the *Settings > Display Settings* menu item.

If the symbol is an aircraft (*) then it indicates that ADS-B messages that contain latitude and longitude data are being received from this aircraft.

If the symbol is a solid circle (●) then this indicates that ADS-B messages are being received from the aircraft, but that they do not contain latitude and longitude data.

If the symbol is four diamonds (❖) then this indicates that only Mode-S messages are being received from the aircraft (but no ADS-B messages).

The **State** column uses colour coded arrows to indicate whether the aircraft is:

- Ascending: a thick, upward pointing blue arrow 
- Descending: a thick, downward pointing brown arrow 
- Flying straight and level: a thick, horizontal blue-green arrow 
- On the ground: a horizontal arrow as for flying straight and level, but thin and grey.

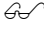
The **Show Trail** column indicates whether or not the aircraft is being individually tracked. A tick indicates that it is.

The **Flag** column displays the flag corresponding to the country of the aircraft (see the Country field below).

The **Operator Flag** column can be used to display a graphic for each aircraft, typically to show its operator. Operator flag graphic files must

be in .bmp format and must be placed in an OperatorFlags subdirectory. To set an aircraft to display the operator flag, enter the name of the file minus the .bmp extension into the *Operator Flag Code* field of the Edit Aircraft Details dialog box in the Aircraft Details Window.

For example, if you enter "BAW" into the OperatorFlagCode field of an aircraft, and you have previously placed the file *BAW.bmp* into the folder (*Installation path*)\OperatorFlags, then the bitmap from *BAW.bmp* will be displayed in the Operator column for that aircraft.

 Third party applications may be used to populate operator codes in the database.

The **Interested** column displays a symbol if the aircraft has been marked as one that you are interested in. See the description of the *Aircraft > Show Only Aircraft Marked Interested* menu item for more details.

The **Code** column shows the 24-bit Mode-S address of the aircraft. It is displayed as six hexadecimal digits. A range of addresses is assigned to each country by ICAO, and the country then assigns addresses within its allocated range to aircraft registered there. The address code is used by BaseStation to identify individual aircraft uniquely.

The **Callsign** column shows the call-sign identification of the flight. This is sent by the aircraft in ADS-B messages.


The **Registration** column shows the registration mark of the aircraft. This can be set for each aircraft using the Registration field in the Aircraft Details Window or a third party database population tool.

The **User Tag** column contains user text that can be set for each aircraft using User Tag field in the Aircraft Details Window.

The **ICAO Code** column shows the ICAO operator code of the aircraft. This can be set for each aircraft using the Operator Flag Code field in the Aircraft Details Window or using a third party database population tool. This code is used also by BaseStation to determine which bitmap to display in the Operator Flag column.

The **Country** column shows the country of registration of the aircraft. This is determined automatically by BaseStation from the Mode-S address of the aircraft using information in the file *countries.dat*.

The **Altitude** column shows the altitude that was last reported by the aircraft. By default this is displayed in feet but may optionally be displayed as a *flight level*. See the *Settings > Display Settings* menu for details.

 Aircraft on the ground do not report their altitude in ADS-B messages, and will be displayed with an altitude of zero.

The **Latitude** and **Longitude** columns display the last reported position of the aircraft, if any.

The **Speed** column shows the aircraft's ground speed, in knots, if reported. Not all ADS-B equipped aircraft report their velocity over the ground.

The **Track** column shows the track angle of the aircraft over the ground, in degrees, if reported.

The **Vertical Rate** column displays the rate of climb (or descent if negative) of the aircraft in feet per minute. Not all aircraft report this information.

The **Squawk** column shows the "squawk" code, if any, that the aircraft is transmitting (this is also known as the Mode A or Mode 3 code). This is a four digit code where each digit is in the range 0 to 7, giving 4096 possible codes. Under certain circumstances, the squawk code will be displayed with a symbol after it. The possible symbols are:

* (Ident): Transmitted when the pilot presses the "Ident" button in response to a request from Air Traffic Control. Normally transmitted for 18 seconds.

+ (Alert): Transmitted when the squawk code changes (usually for 18 seconds).

E (Emergency): Indicates that the squawk is one of a number of internationally agreed codes defined to indicate an emergency. These include 7700 (emergency condition), 7600 (radio failure) and 7500 (unlawful interference).

The **Last Update** column displays the time that the last message was received for that aircraft.

The **Time Tracked** column shows the time that has elapsed since the first message was received for the aircraft.

2.4.2 Using The Aircraft List

To select an aircraft, simply click on that aircraft's row. You can move the selection up and down by using the arrow keys.

Initially, the Aircraft List is sorted on **Last Update**. This means that as new aircraft appear, their rows are inserted in at the top, with the existing rows shuffling down.

To sort on a different column, simply click on that column's heading. The column that is the current sort column is drawn depressed as an indicator, and has an arrow showing the direction of sort. (Some columns default to ascending, others to descending). You can toggle the direction of sort by clicking a second time on the heading.

You can toggle the "show track" status of the currently selected aircraft with the space bar.

Double-clicking on the Aircraft List will bring up the Aircraft Details window. Once that is visible, it will display the details of whichever aircraft is selected.

Finally, right-clicking on the Aircraft List will display a pop-up menu containing the menu options that particularly apply to the Aircraft List.

The Show All button determines which aircraft are shown on the aircraft list. It duplicates the functionality of the "*Show All Aircraft (Inc. Non Position)*" menu item in the Aircraft menu (see the description of that item for details).

The *Int Only* button also determines which aircraft are shown on the aircraft list. It duplicates the functionality of the *Aircraft > Show Only Aircraft Marked Interested* menu item (see the description of that item for details).

2.4.3 Customising The Aircraft List

You can change the width of the columns by clicking on the dividing line between two column headings and dragging it to the left or right with the mouse.

You can opt to hide or display certain columns using the Columns submenu of the Aircraft menu.

2.5 Toolbar

Most of the items on the toolbar are duplicates of commonly used menu items, and are described in the section above. However, there are four items that are unique to the toolbar, and are described in this section.



Figure 36: The BaseStation toolbar

2.5.1 Zoom Diameter Selector

Popping this down offers a range of specific zoom diameters (the width, in nautical miles, of the real-world area covered by the radar scope range rings) to set the current view to. You can also type in a specific number.

2.5.2 Zoom Diameter Slider

This offers an alternative way to zoom in and out. Simply slide to the left to zoom in, and to the right to zoom out.

2.5.3 Saved View Selector

This allows you to select a previously saved view to apply to the current view. The current view (zoom diameter, zoom centre and display toggle settings) will change to the settings saved in the saved view.

2.5.4 Current Location Selector

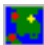
This allows you to change which of your previously defined locations is the one you are currently at. Setting the correct location is important for a number of reasons:

- The system will use the correct current latitude and longitude when decoding messages picked up from aircraft on the ground, thus ensuring that their positions are correctly decoded. This is because aircraft on the ground do not transmit their full global position in the ADS-B messages, so decoding the correct position relies on knowing the location of the receiving unit, and the assumption that the aircraft will be within a few hundred miles of the receiver.
- If you later browse the flight in BaseStation Reporter you will be able to see the location from which the aircraft was detected.

- If you use BaseStation Logger to log the data messages received for later analysis, you will be able to distinguish between messages received from different locations.

☛ To display aircraft on the ground correctly, their true position must be within approximately 45 degrees of latitude and 45 degrees of longitude from the currently selected location.

For more information about locations, see the entry for the Locations Manager under the Settings menu.

☞ The Locations Manager can also be opened by clicking on the toolbar button  next to the current location selector.

☞ You might typically change the location if you run your system on a laptop and are using it outside your home.

☞ When you change the current location, it is changed for the entire session. If you started BaseStation at 9:01 am and at 9:03 am change the location, the software assumes that you've been at that new location since you started up.

2.6 Sidebar

The sidebar offers duplicates of some of the controls in the main toolbar, plus one unique control: the Full Screen button.

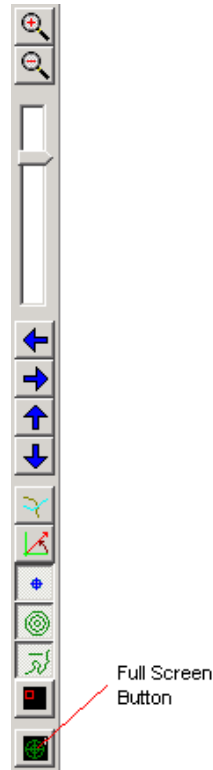


Figure 37: The BaseStation side bar

Clicking on the Full Screen button puts the application into full screen mode. In this mode, the application occupies the entire screen (including the area where the taskbar would normally be) and all controls except for the sidebar and the radar screen are hidden (i.e. no menu, no toolbar, no status bar and no aircraft list).

This mode is ideal if you want to concentrate on the Radar Screen alone without any distractions.

To get out of full screen mode, simply click on the Full Screen button again.

- ☞ Full screen mode can also be toggled by pressing Ctrl-Alt-F or via a popup menu by right clicking on the radar screen.

3 Radio Interfaces

The SBS-1eR features both an external radio interface and a built-in Air-band / VHF FM receiver with integrated audio amplifier.

The external radio interface (which is also available on the SBS-1e and SBS-1) requires a radio firmware option key to operate and is described further in the next section.

The Built-in radio receiver covers the following frequencies :-

- Air-band AM :
118.00 Mhz to 137.00 Mhz with 25Khz or 8.33Khz channel spacing.
- A UHF AM facility is available on SBS-1eR units with serial number 18000 or greater.
- VHF FM :
76.00 Mhz to 108.00 Mhz with 50Khz channel spacing.

3.1 Using The Built-in Radio Receiver: *SBS-1eR*

3.1.1 Customising The Built-in Radio User Interface

The built-in radio user interface includes extra toolbar buttons. Both the built-in radio and the external radio toolbar buttons can be independently made visible via the *Settings->Toolbars->Internal Radio* and *Settings->Toolbars->External Radio* menu options.

When the built-in radio toolbar is enabled should see the following buttons appear on your toolbar:



Figure 38: The Internal Radio Toolbar

If the external radio interface is also enabled then both sets of buttons will appear:



Figure 39: The Radio Toolbars With Both Radios Enabled

3.1.2 Using The Radio Interface

3.1.2.1 Radio Menu

The top part of the radio menu allows you to turn the radio on and off and select the band.


The *Preset Frequencies* submenu allows you to select any frequency in BaseStation's radio frequency database. If you select a frequency then the built-in radio receiver will be tuned into that frequency.


Note: BaseStation comes with frequencies for the UK. You can add

more frequencies to the .rfq files in the *RadioFrequencies* subdirectory. Details of how to do this are available on the Kinetic forums.


The remaining menu items are equivalent to the items in the radio toolbar below.


3.1.2.2 Radio Toolbar

 Pressing this button makes the Radio Control Panel appear. Pressing it again makes it disappear.

 Pressing this button brings up a menu which allows you to select any frequency in BaseStation's radio frequency database.

 Pressing this button mutes the sound.

 Pressing this button increases the volume.

 Pressing this button decreases the volume.

3.1.2.3 Radio Control Panel

The Radio Control Panel looks like this:

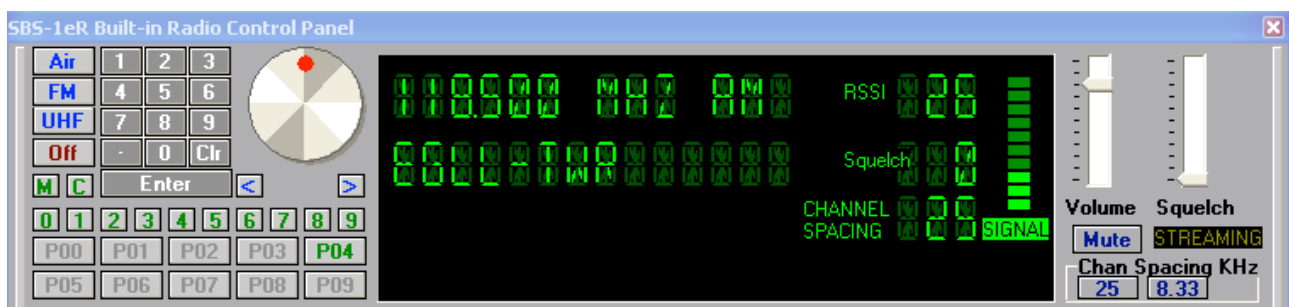


Figure 40: The Radio Control Panel

The blue buttons on the left allow you to select which frequency mode to use.

The **Air** button selects Air-band AM operation.

The **FM** button selects VHF FM operation.

*The **UHF** button will be present only for SBS-1eR units manufactured with serial number 18000 or greater. It may be used to select the UHF Air-band, AM operation.*

The **Off** button allows you to turn the radio off. To turn the radio on again, simply select either the Air or FM button.

The **Channel Spacing** buttons select between 8.33Khz and 25Khz channel spacing in Air-band AM operation mode. In VHF FM mode, the channel spacing is fixed at 50Khz spacing.

The **Mute** button on the right-hand side of the panel allows you to mute the volume. When the radio is muted the green SIGNAL annunciator will turn into a red MUTE annunciator.

The **Volume** slider on the right-hand side of the panel allows you to adjust the volume.

The **Squelch** slider on the right-hand side of the panel allows you to adjust the squelch level in both AM and FM mode. When squelch is in operation, the signal level bar graph will turn from green to red. In Air-band AM mode, the squelch level is the level at which the built-in radio will automatically mute if the RSSI value falls below the setting.

In VHF FM mode, the squelch level is the level at which the built-in radio will automatically mute if the SNR value falls below the setting.

3.1.2.4 Frequency Selection

The numeric keypad allows you to enter a frequency manually, clicking the **Ent** button when you have finished or **Clr** if you make a mistake. You can also type the frequency in using the numeric keypad of your PC, pressing the return/enter key when done.

The large knob (with red dot) allows you to adjust the frequency relative to its current setting. Simply click on the red dot and drag it either clockwise, or anti-clockwise. Alternatively you can step the frequency up or down using the blue "<" and ">" buttons just under the frequency knob.

The "LED" display shows the current frequency. If you selected the frequency by selecting a frequency from the BaseStation database (as opposed to manually typing it in) then it will also show the description of this frequency (in this case "EGLL-TWR").

3.1.2.5 Frequency Presets

BaseStation can store up to 100 preset frequencies for the internal radio. These are accessed using the preset buttons at the bottom left of the control panel.

To listen to a preset frequency, simply click on the required preset button. Preset buttons with a frequency stored are shown in green, unused presets are shown greyed out. The presets are displayed in banks of 10, and you can switch between banks using the smaller green buttons labelled 0 to 9.

To store a frequency you are tuned to, click on the green M button and then the desired preset button: P00, P01 etc. Unused presets are shown in brown and used presets are shown greyed out after you click on M.

To clear a preset, click the green C button followed by the preset button.

3.1.2.6 RDS Data

The bottom lines of the LED display are used to display RDS data from FM broadcasts, as in the example below:



Figure 41: The Radio Control Panel - Broadcast FM

3.1.2.7 Audio Streaming

BaseStation generates a digital audio stream from the built-in radio, for use by third-party applications. When such an application is connected, the STREAMING indicator on the control panel appears "lit" in bright yellow. When no streaming is taking place, it appears in dull yellow.

3.1.2.8 Local Frequencies Right-Click Popup

You can right-click anywhere on the radar display and select "Local Frequencies-Built In Radio" from the resulting pop-up menu to get a list of the radio frequencies in use in that area. For example, clicking somewhere between Heathrow and Elstree would produce the following menu:

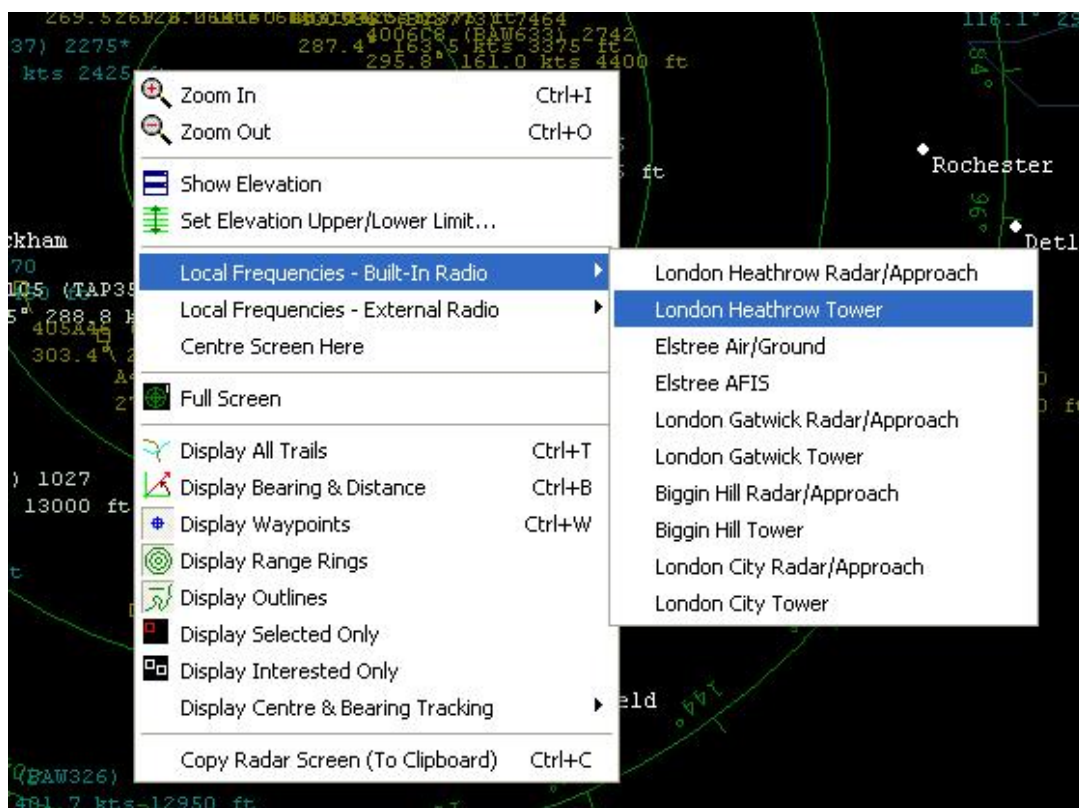


Figure 42: The Local Frequencies submenu

The frequencies are sorted in order of the waypoints that they are associated with.

Simply click on the desired frequency from the list to tune the radio to that frequency.

The built-in radio and external radio can be tuned to separate frequencies for maximum flexibility.

3.2 Using The External Radio Interface

3.2.1 Enabling The External Radio Interface

3.2.1.1 Enabling The Firmware

The SBS-1eR, SBS-1e and SBS-1 have the capability to link to an external radio (a.k.a. a scanner). To do this, you must purchase the radio interface option from the Kinetic e-store. You will then receive a license key by email.

Instructions for updating and configuring the firmware will be included with this package. The license code is entered using the *Settings > Install Firmware Option* menu item.

3.2.1.2 Configuring BaseStation

The radio interface supports multiple models of radio through the use of a separate BaseStation Interface Unit (.biu) file for each model or range.

To configure the interface, launch the *Hardware Settings* dialog box by selecting the *Settings > Hardware Settings* menu item, and then select the correct .biu file for your model of radio. If you are unsure which .biu file is appropriate, then contact your dealer for advice.

You should also be sure to select the appropriate method of connection (either your PC's serial port or the SBS-1eR's serial port).

Once you have done this and clicked on OK, the Radio menu will appear in the top-level menu bar.

3.2.2 Customising The External Radio User Interface

The radio user interface includes extra toolbar buttons that are not initially activated. To activate them, click on the *Settings > Toolbars > Radio* menu option.

You should then see the following buttons appear on your toolbar:



Figure 43: The External Radio Toolbar

3.2.3 Using The External Radio Interface

- ☞ You will not necessarily have access to all functions in the radio interface, as only those functions that are supported by your model of radio are implemented. For example, if your radio does not support the setting of volume from a PC, then all volume controls will be greyed out.


3.2.3.1 Radio Menu


The first few items on the radio menu allow you to turn the radio on and off and reset it.

The *Preset Frequencies* submenu allows you to select any frequency in BaseStation's radio frequency database. If you select a frequency then your scanner will be tuned into that frequency. Note that BaseStation comes with frequencies for the UK. You can add more frequencies to the .rfq files in the RadioFrequencies subdirectory. Details of how to do this are available on the Kinetic forums.


The remaining menu items are equivalent to the items in the radio toolbar below.

3.2.3.2 Radio Toolbar

 Pressing this button makes the Radio Control Panel appear. Pressing it again makes it disappear.

 Pressing this button brings up a menu which allows you to select any frequency in the BaseStation radio frequency database.

 Pressing this button mutes the sound.

 Pressing this button increases the volume.

 Pressing this button decreases the volume.

3.2.3.3 Radio Control Panel

The Radio Control Panel looks like this:

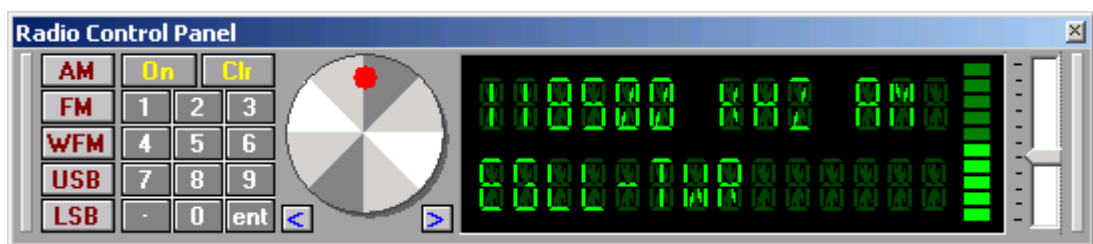



Figure 44: The External Radio Control Panel

The grey buttons on the left allow you to select which frequency mode to use.

The **On** button allows you to turn the radio on.

The numeric keypad allows you to manually enter a frequency, clicking the **ent** button when you have finished or **Clr** if you make a mistake. You can also type the frequency in using the numeric keypad of your PC, pressing the enter key when done.

 Although BaseStation remembers the frequency as kHz (as in the above example), you can enter them as MHz (i.e. you could type in "118.5" in order to select 118500 khz – BaseStation will simply convert it).

The large knob (with red dot) allows you to adjust the frequency relative to its current setting. Simply click on the red dot and drag it either clockwise, or anti-clockwise.

The blue left and right buttons allow you to make minor adjustments to the frequency.

Finally, the slide on the right-hand side of the panel allows you to adjust the volume.

The “LED” display shows the current frequency and volume. If you selected the frequency by selecting a frequency from the BaseStation database (as opposed to manually typing it in) then it will also show the description of this frequency, in this case “EGLL-TWR”.

3.2.3.4 Local Frequencies Right-Click Popup

You can click anywhere on the map and select “Local Frequencies” from the resulting pop-up menu to get a list of the radio frequencies in use in that area. For example, clicking somewhere between Heathrow and Elstree would produce the following menu:

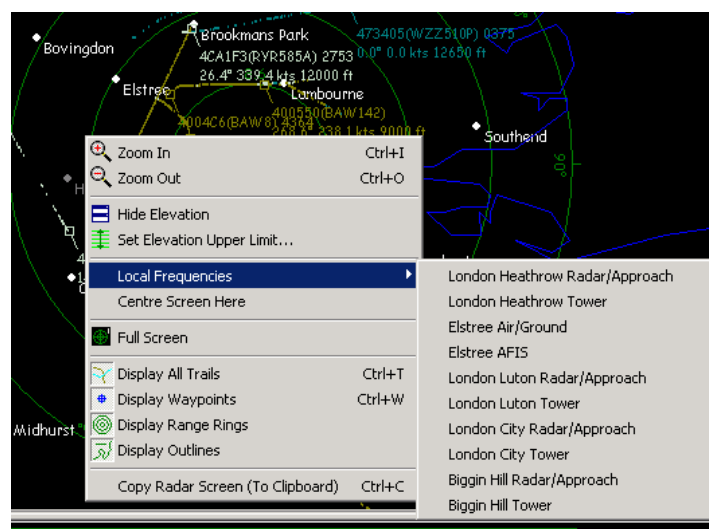


Figure 45: The Local Frequencies submenu

The frequencies are sorted in order of the waypoints that they are associated with. Simply click on the desired frequency to have your radio tuned to that frequency.

4 BaseStation Reporter

4.1 Introduction

The BaseStation Reporter is the companion program to BaseStation. It allows you to browse the historical data that BaseStation saves into the database.

4.2 Using BaseStation Reporter

4.2.1 Main Screen

4.2.1.1 Aircraft Tab

The aircraft tab shows the aircraft in the database in the top pane, with the flights made by the selected aircraft in the bottom pane.

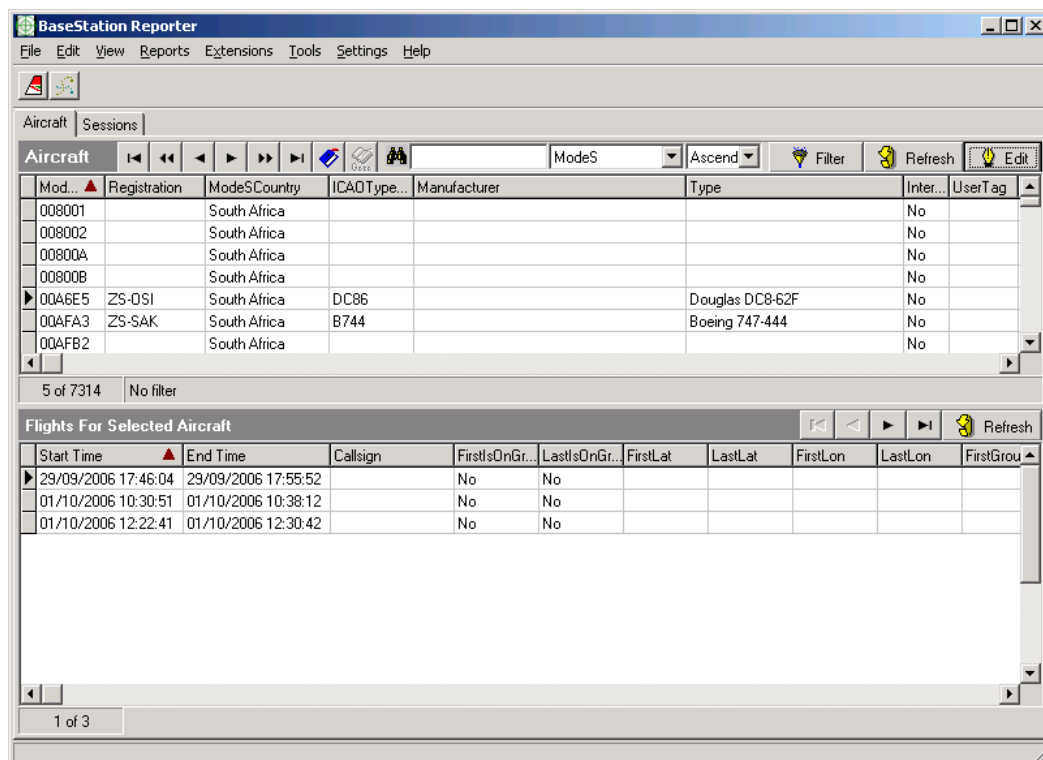


Figure 46: Reporter's main screen, open on the Aircraft tab

The grid can easily be customised. To sort on a column, click on it. To change the sort order to descending, click on it again.

- You can also set the sort order and direction using the pop-down lists on the aircraft control strip (the ones just to the left of the Filter button).

To change the order of the columns, simply click on a column heading, and drag it to where you want it to be. The Refresh buttons cause the application to re-read its data from the database.

- You would only need to do that if you want to see aircraft and flights that BaseStation has since written into the database.

To search for a particular record in the aircraft list, first set the sort order of the aircraft grid to the field you want to search on, and then start typing the phrase you are looking for into the edit box next to the binoculars icon. After you type each letter, the grid will jump to the first aircraft that matches that phrase. (i.e. If you set to sort on manufacturer and then type in "Bo" it might jump to the first aircraft with a value of "Boeing"). If you type a letter such that the phrase now doesn't match an aircraft, the edit box will turn red.

The Filter button allows you to set a filter so that only aircraft matching certain criteria are shown in the aircraft. Upon clicking on it, the following dialog box will appear:



Figure 47: The Set Aircraft Filter dialog box

To set a filter, select the "Show only those records where" radio button, and then select the desired filter in the lower boxes.

The filter will be displayed in the status strip under the grid, and will stay active until you cancel it using the Set Aircraft Filter dialog (by selecting back to "Show all records").

The Edit button allows you to edit the details of the selected aircraft. Upon clicking on it, the aircraft details will appear in a dialog box:

Figure 48: The Edit Aircraft dialog

To update the values for the aircraft, simply enter in the details and then click on OK. To help you keep track of which values you have edited, edit boxes turn red once changed.

4.2.1.2 Sessions Tab

The sessions tab shows the sessions in the database in the top pane, with the flights made during the selected session in the bottom pane.

☞ A session is basically the period from when you ran BaseStation to when you shut it down. Each time you do this it counts as one session.

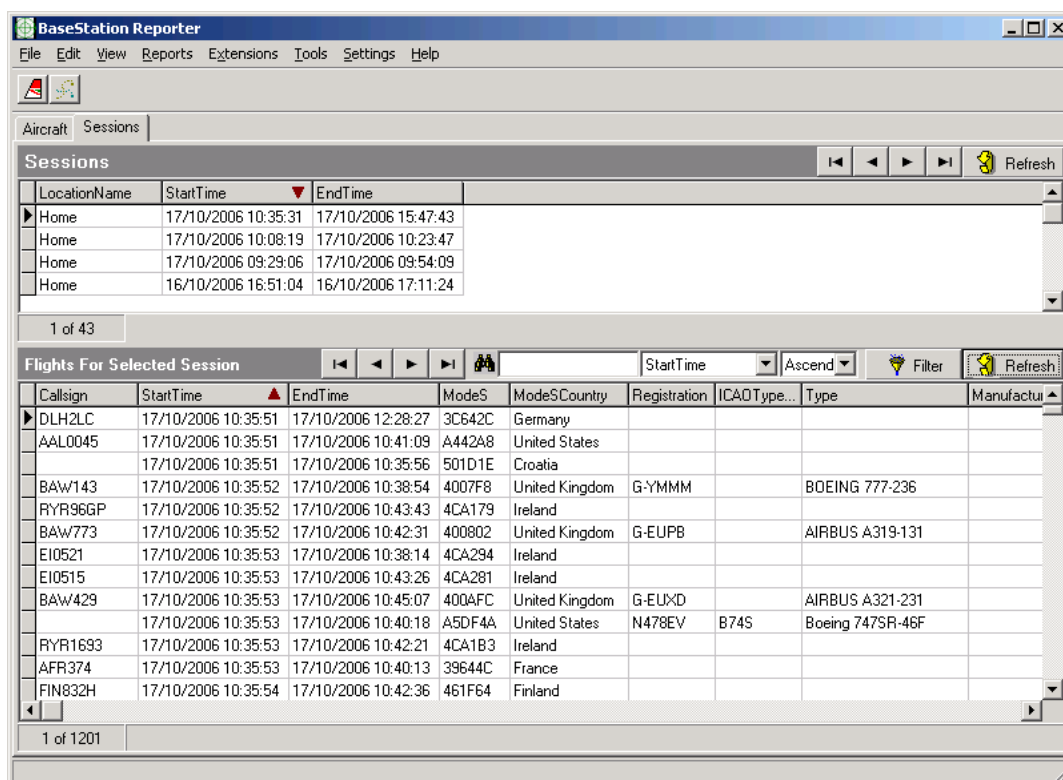


Figure 49: Reporter's main screen, open on the Sessions tab

The controls on the sessions tab work in exactly the same way as on the aircraft tab. In particular, you can search and filter the Flights grid in the same way as you can the Aircraft tab's Aircraft grid.

4.2.2 Menus

4.2.2.1 File

Export Database: The options in this submenu allow you to export specific tables within the database to .csv files, which can be imported by spreadsheet or database applications.

Export Grid: The options in the submenu allow you to export the four grids displayed on the main window to .csv files.

Backup Database: This menu option produces a *BaseStation backup file* (.bbk) that contains all of the data in the database.

Restore Database: This menu option allows the user to restore a previously backed up set of data (.bbk file).

- 💣 If you restore a .bbk file, all of the data that is currently in your database will be erased.

4.2.2.2 Edit

Copy: The options in the submenu allow you to copy the four grids displayed on the main window to the clipboard.

4.2.2.3 Reports

Aircraft Report: This menu option produces a report (that can be printed, previewed, or saved to .csv) of all the aircraft in the database.

Flights Report: This menu option produces a report (that can be printed, previewed, or saved to .csv) of all the flights that were tracked for a certain time period.

- ☞ The initial from and to times that appear in the Flights Report dialog are taken from the session that is currently selected in the Sessions tab. (i.e. The default is to produce a report showing all the flights that were made during the current session).

4.2.2.4 Tools

Pack Database: This menu option removes unused space from the database file to reduce its size.

- 💣 This option must not be invoked while BaseStation (or any other application that uses the BaseStation database) is running.

4.2.2.5 Settings

Show Status Bar: This menu option toggles the status bar on and off.

Allow Direct Aircraft Editing: Setting this menu option (i.e. clicking on it so that a tick appears) allows you to edit the values in the aircraft grid simply by clicking on a cell).

- 💣 This setting should be used with caution since, when enabled, it is easy to inadvertently alter data without realising.

Set Grid Request Limits: This menu option brings up a dialog that allows you to select how many records can be shown in each of the four grids. If your database grows beyond this amount, then the status area under each grid will show you which portion of the table you are currently looking at, and will have controls allowing you to move through the data.

5 BaseStation Logger

BaseStation Logger is a simple program that, when run, connects to BaseStation and writes out log files containing all the messages that are being received as well as other bits of information. These files, which are in CSV format, can then be analysed by spreadsheets such as Excel, or by custom applications.

A detailed description of the format of these log files is beyond the scope of this manual. Those requiring more details should visit the Development forum on the SBS-1eR web-forums.

Kinetic House : 44 Hatton Garden • London • EC1N 8ER T: +44 (0)207 404 1914 F: +44 (0)207 404 1916
Elstree Aerodrome : Borehamwood • Hertfordshire • WD6 3AR T: +44 (0)208 953 8855



DECLARATION OF CONFORMITY
(According to ISO/IEC Guide 22 And EN45014)

We, Kinetic Avionic Products Limited, Kinetic House, 44 Hatton Garden,
London, EC1N 8ER, United Kingdom

declare that the following product:

SBS-1 Real-Time Virtual Radar

is in conformity with the provisions of the following European Directives:

Council Directive 89/336/EEC, as amended by 91/263/EEC, 92/31/EEC,
93/68/EEC, 93/97/EEC and 98/13/EC

Council Directive 73/23/EEC, as amended by 93/68/EEC

And the following standards:

EN55022:1994 + A1:1995 + A2:1997

EN55024:1998 + A1:2001

EN61000-3-2:2000

EN61000-3-3:1995 + A1:2001

FCC Part 15, Class A

Done London, United Kingdom, on 25th August 2005

A handwritten signature in black ink, appearing to read "M. Maurice", is written over a horizontal dotted line.

Mark Maurice
Product Manager

Kinetic Avionic Products Ltd. - Palladium House, 1-4 Argyll Street, London W1F 7LD Registered in England No: 3316717